

# *Heart Transplant Update*

**David Chang, MD**

Associate Director, Post Graduate  
In Heart Failure and Heart Transplantation

Cedars Sinai Smidt Heart Institute  
Los Angeles, California

3/16/2019



**CEDARS-SINAI®**

LEADING THE QUEST™

[cedars-sinai.edu](http://cedars-sinai.edu)

# Relevant Financial Relationship Disclosure Statement

I will discuss off label use and/or investigational medications in my presentation

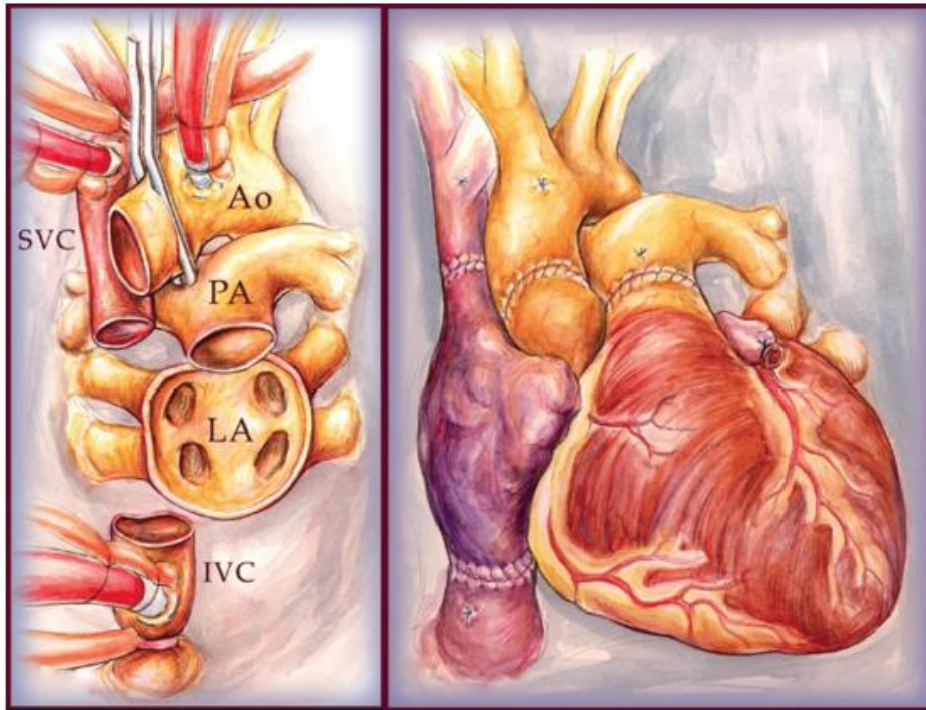
I have relationship(s) to disclose: Clinical Trial Principal Investigator (Amgen-GALACTIC HF, Biocardia-CardiAMP, Mesoblast-DREAM HF) and Stock Interest (Abbott, Abbvie, Repligen, Portola, Amarin)



# Lecture Overview:

- Historical perspective of heart transplantation
- Statistics and survival post heart transplant
- Immunologic compatibility
- Post heart transplant complications
- Conventional and novel methods to detect rejection
- Advances in immunosuppression strategies
- Future directions

# Heart Transplantation



## Over 50 years since the first human heart transplant

- **1967** First human heart transplant performed by Christiaan Barnard in South Africa
- **1968** Norman Shumway performed first adult human transplant in United States
- **1976** Cyclosporine discovered, radically improving survival by reducing rates of rejection



# The Evolution of Immunosuppressive Therapies

1960's

Corticosteroids

Polyclonal antibodies

Azathioprine

1980's

Cyclosporine

Monoclonal antibodies

1990's

Tacrolimus

Mycophenolate mofetil

Sirolimus

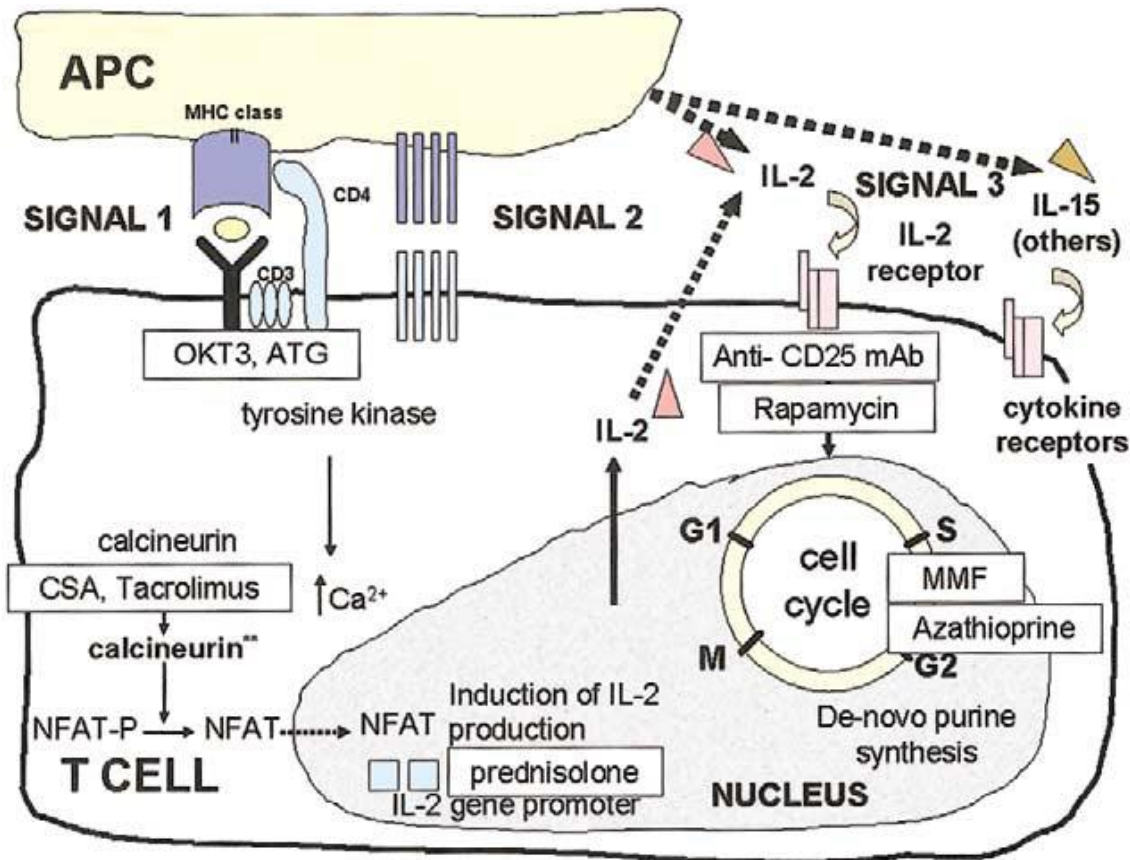
IL2R Blockade

2000's

Everolimus



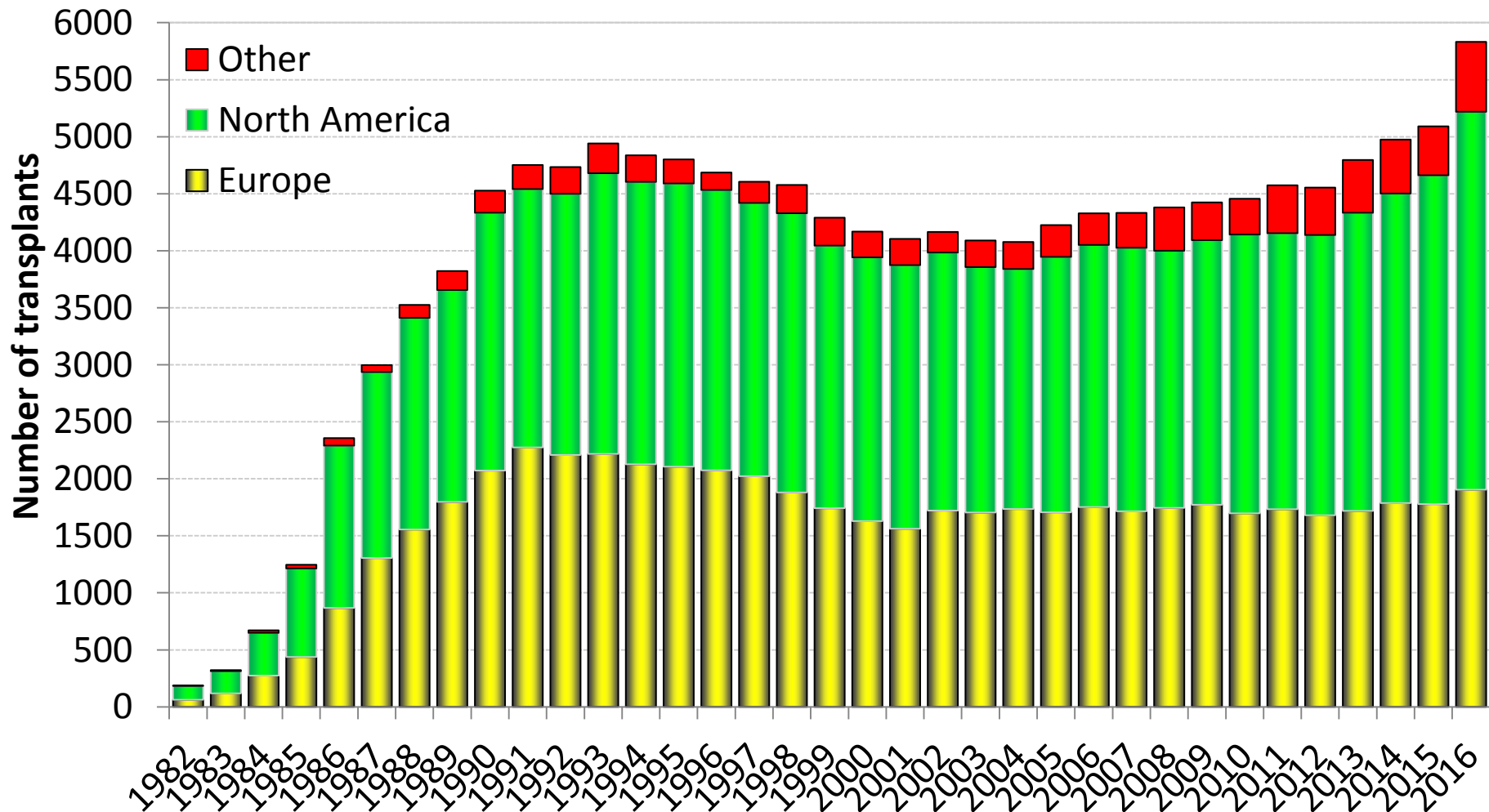
# Pathways of maintenance immunosuppression



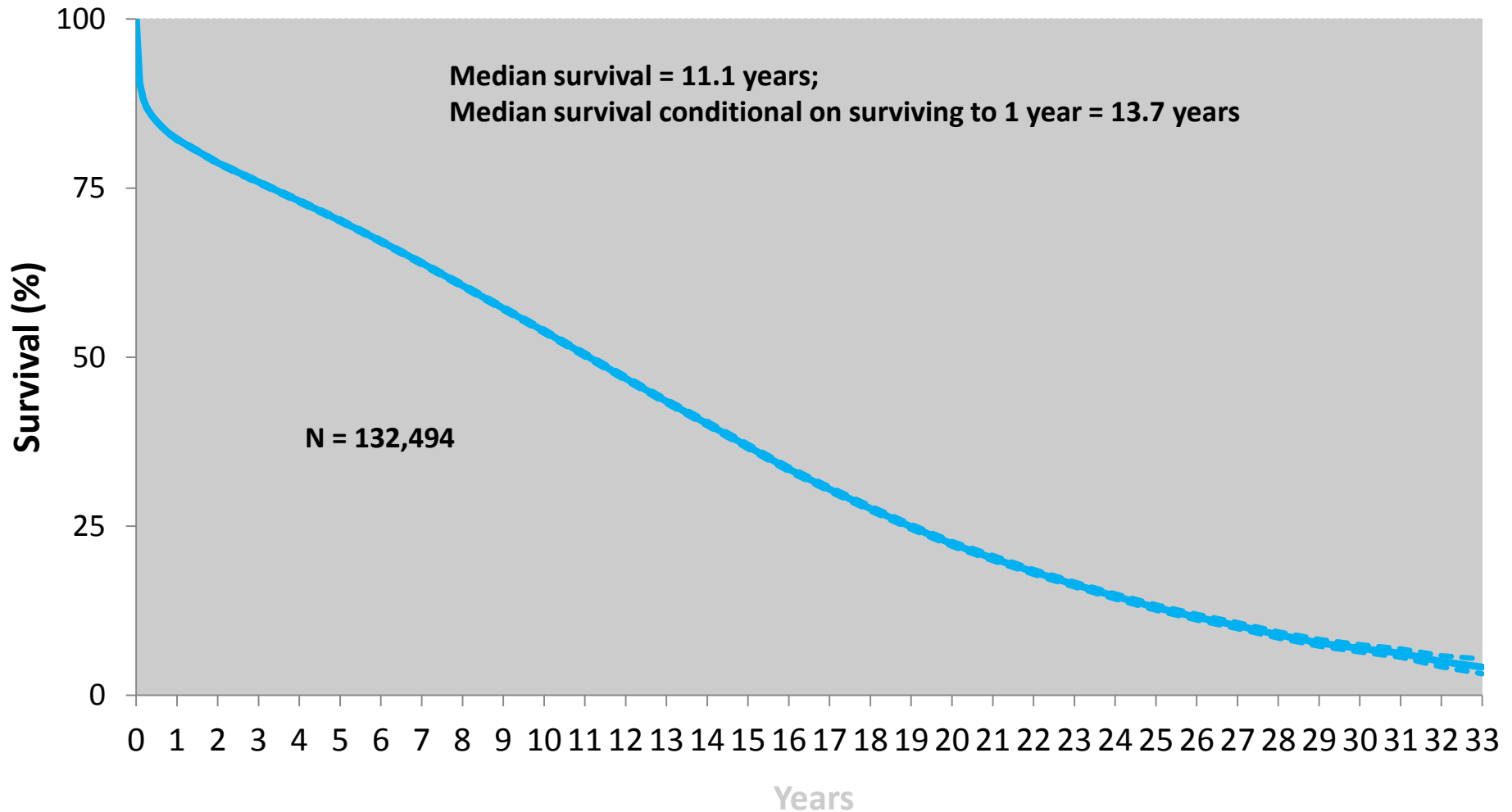
## Categories of Immunosuppressants:

- Calcineurin Inhibitors
  - Tacrolimus
  - Cyclosporin
- Inhibitors of Purine Metabolism
  - Mycophenolate Mofetil
  - Azathioprine
- Proliferation Inhibitors
  - Rapamycin/Sirolimus
  - Everolimus

# Number of Adult and Pediatric Heart Transplants by Year and Location



# Adult Heart Transplants Kaplan-Meier Survival by Era (Transplants: January 1982 – June 2016)





# Cedars-Sinai Heart Transplant Program

- The Cedars-Sinai Heart Transplant Program began in December 1988 and as of December 2018, more than 1,600 heart transplant surgeries have been performed.
- In the past 5 years:
  - We have broken the prior U.S. record every year in the annual number of adult heart transplant surgeries performed, averaging more than 120 heart transplant surgeries per year.
  - Overall 1-year survival of 91% surpasses the national average.



# SRTR Heart Transplant Outcomes (January 2019)

**Table C12D. Adult (18+) 1-year patient survival (deceased donor graft recipients)**  
**Single organ transplants performed between 07/01/2015 and 12/31/2017**  
**Retransplants excluded**

	CACS	U.S.
Number of transplants evaluated	240	6,144
Estimated probability of surviving at 1 year (unadjusted for patient and donor characteristics)	91.99%	91.79%

**Table C13D. Adult (18+) 3-year patient survival (deceased donor graft recipients)**  
**Single organ transplants performed between 01/01/2013 and 06/30/2015**  
**Retransplants excluded**

	CACS	U.S.
Number of transplants evaluated	249	5,040
Estimated probability of surviving at 3 years (unadjusted for patient and donor characteristics)	86.75%	85.22%

# SRTR Heart Transplant Outcomes (January 2019)

Table C18. **Multi-organ transplant patient survival: 07/01/2015 - 12/31/2017**

Adult (18+) Transplants

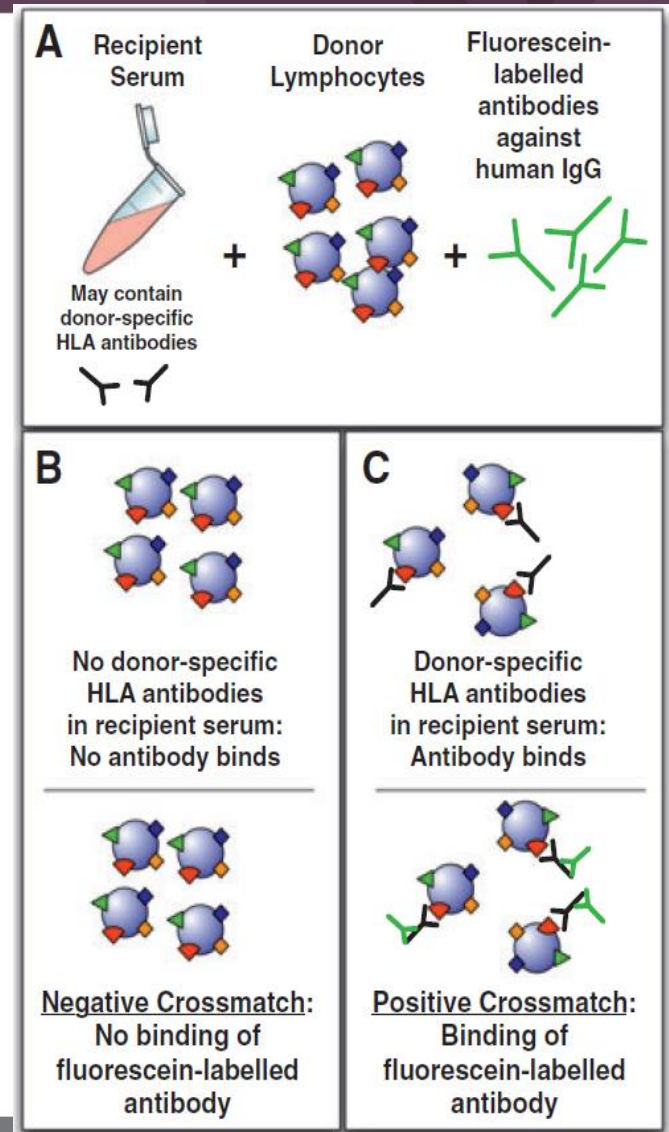
First-Year Outcomes

Transplant

<u>Transplant Type</u>	<u>Transplants Performed</u>		<u>Patient Deaths</u>		<u>Estimated Patient Survival</u>	
	<u>CACS-TX1</u>	<u>USA</u>	<u>CACS-TX1</u>	<u>USA</u>	<u>CACS-TX1</u>	<u>USA</u>
Heart-Lung	1	49	0	8	100.0%	82.9%
Kidney-Heart	35	397	2	35	94.3%	90.8%
Liver-Heart	6	62	0	5	100.0%	91.4%

# Immunologic Compatibility:

- Crossmatch:
  - Virtual
  - Prospective
  - Retrospective



Patel R, Terasaki PI. Significance of the positive crossmatch test in kidney transplantation. *N Engl J Med* 1969; 280:735–739.

Mulley WR, Kanellis J. Understanding crossmatch testing in organ transplantation. *Nephrology* 2010.

# Panel Reactive Antibody (PRA)

- The serum of a transplant candidate is tested against a “panel” of HLA antigens that is representative of the HLA makeup of the donor population.
- The result of the PRA test is reported as a percentage.
- The “percent PRA” theoretically means that the candidate has HLA antibodies to about that percentage of the potential donor population.

Table 2. Multivariate Cox Proportional Hazard Regression Analyses of Patient Survival

Risk Factor <sup>a</sup>	Hazard Ratio	95% Confidence Interval	p Value
PRA (continuous variable)	1.005	1.002–1.009	<0.001
PRA 1%–10% <sup>b</sup>	1.17	0.96–1.42	0.12
PRA 11%–25% <sup>b</sup>	0.94	0.99–1.00	0.73
PRA >25% <sup>b</sup>	1.4	1.09–1.77	0.007

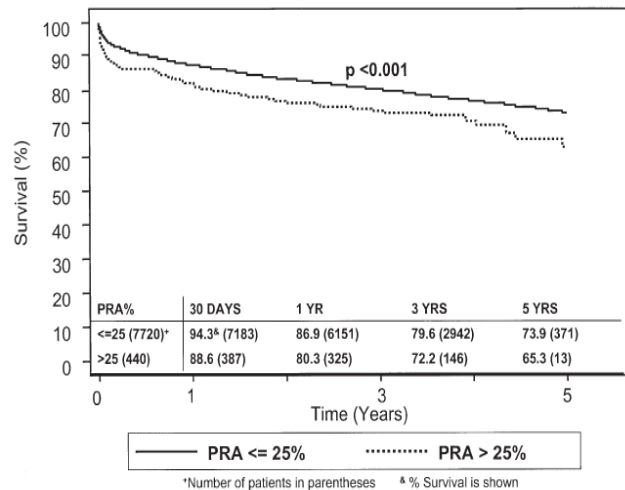


Fig 3. Kaplan-Meier estimates of mortality stratified by panel-reactive antibody (PRA) ≤ 25% versus panel-reactive antibody > 25%.

# Calculated PRA (cPRA)

- The cPRA is the percentage of donor hearts in a given population to which a heart transplant candidate has significant anti-HLA antibodies.
- The corresponding antigens to these antibodies are deemed unacceptable. Those potential donors with these unacceptable antigens are automatically turned away.
- The threshold to determine when an anti-HLA antibody is significant is defined by the heart transplant program and is usually dependent on the strength of the antibody.
- The higher the cPRA, the harder it is to find a suitable donor (eg 70% cPRA means that 70% of donors will be automatically turned away).



# Post-Transplant Complications

- Rejection
- Infection
- Cardiac Allograft Vasculopathy (CAV)
- Hypertension
- Nephropathy
- Malignancy

# Rejection

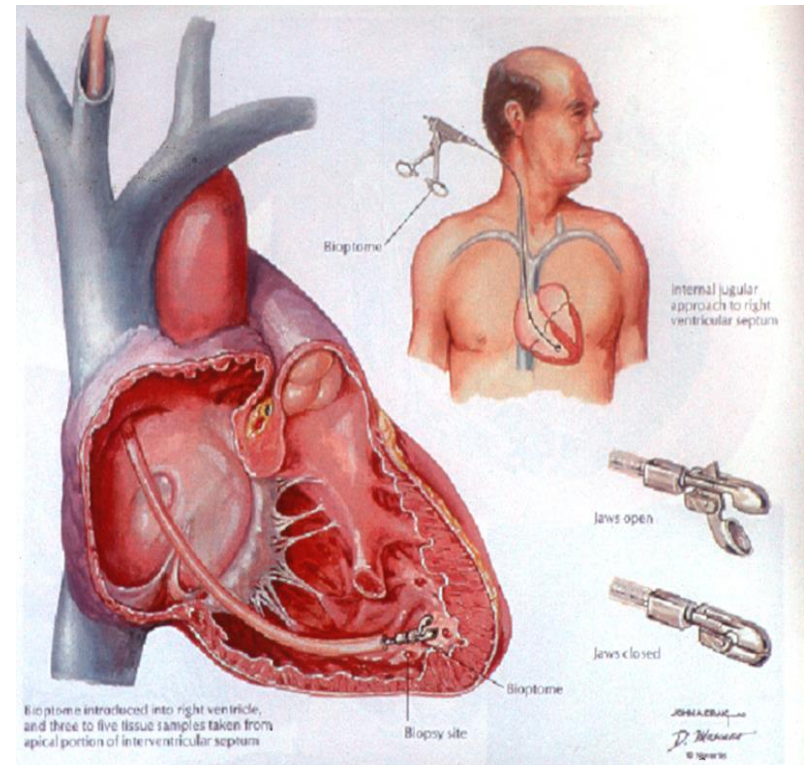
- Signs and symptoms
  - Atrial Fibrillation/Atrial Flutter
  - CHF signs and symptoms
  - Systolic dysfunction/Echocardiogram-Stat
  - New heart block and or bradycardia
- Cellular rejection: leukocytes and necrosis
  - Grade 0: no rejection
  - Grade 1R: mild rejection
  - Grade 2R: moderate rejection
  - Grade 3R: severe rejection
- Antibody-Mediated Rejection (AMR)
  - pAMR 0
  - pAMR 1 (H+), pAMR 1 (I+)
  - pAMR 2
  - pAMR 3



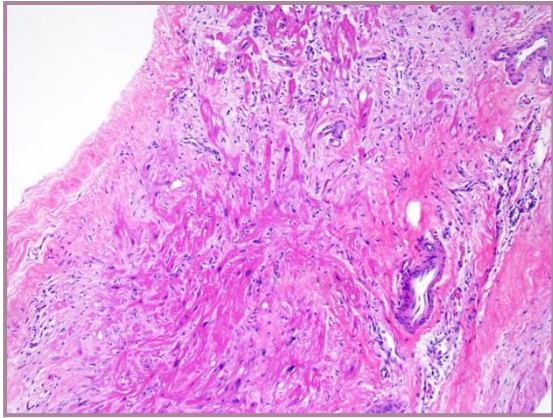


# Endomyocardial Biopsy (EMB)

- Currently, the gold standard for rejection surveillance is the invasive endomyocardial biopsy.
- Among expert pathologists, there is only 67% concordance to identify rejection in the heart biopsy.
- Therefore, there is an unmet need for additional test(s) to detect heart transplant rejection

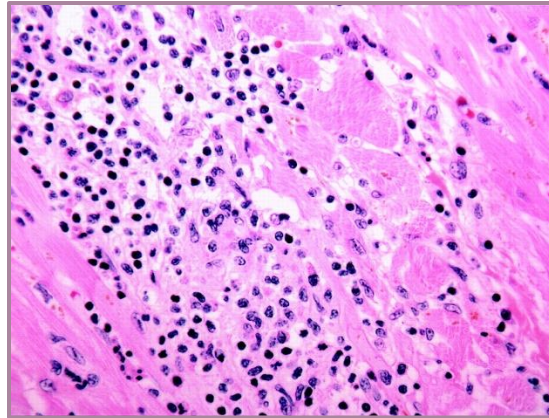


# Common Histological Artifacts that Mimic Rejection



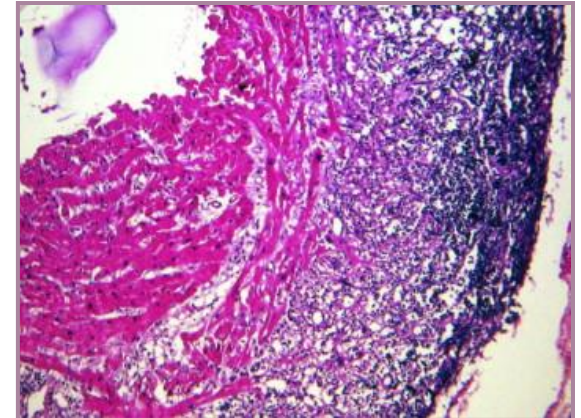
## Old biopsy site

- Common for bioptome to be guided to same site as previous biopsies
- Myocytes in disarray
- If recent: B and T cells seen



## Infection

- CMV or Toxoplasma will show lymphocytic infiltrates



## “Quilty effect”

- First described in 1981 by Billingham et al.
- Occurs in 10% to 20% of EMBs
- Lymphocytic lesion with B and T cell infiltrates
- Considered by some to be a side-effect of cyclosporine

# Novel Means to Detect Rejection in Heart Transplantation

- Molecular paradigm in diagnosis of rejection
  - Intragraft mRNA transcripts
- Donor-derived cell free DNA



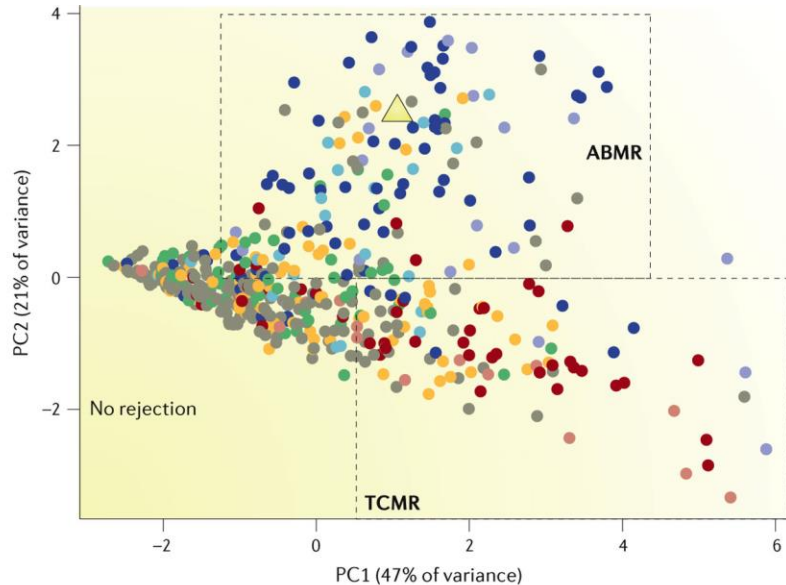
# Intragraft mRNA Assessment of Rejection

- Molecular phenotyping offers the possibility for increased accuracy in diagnosing and treating pathological states
- Traditional histological methods are often subjective and results are qualitative
- By relating gene expression to disease states, a system can be created to diagnose pathologies
- Halloran et al at the University of Alberta devised such a system for identifying rejection and allograft injury in transplant biopsy samples: The Molecular Microscope Diagnostic System (MMDx)

Halloran P et al. *Nat Rev Nephrol* 2016;12:534-48



# How Molecular Analysis Works

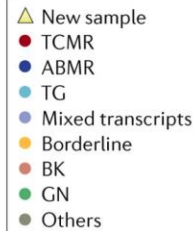


## Histology diagnosis of the 50 nearest neighbours

C4d<sup>-</sup> ABMR: 32%  
C4d<sup>+</sup> ABMR: 16%  
Borderline: 12%  
TG: 11%  
Mixed: 11%  
GN: 6%  
TCMR: 3%  
Other: 3%  
TA/IF: 3%  
No major abnormalities: 2%  
AKI: 1%

## Proportion of the 50 nearest neighbours surviving

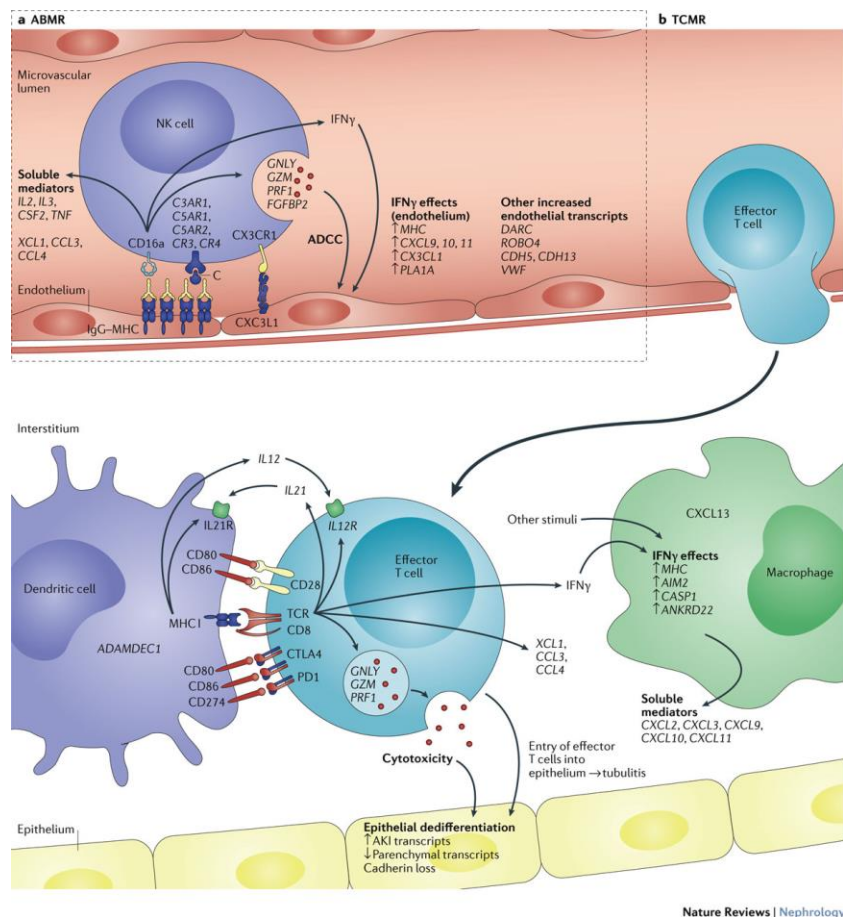
1 year: 0.74  
3 years: 0.43



- Microarrays analyze mRNA in biopsy samples suspended in a RNA reagent e.g. RNeasy
- Machine learning builds algorithms that assign probability of disease state: Known as “classifiers”
- A “classifier” algorithm uses multiple gene-expression values in contrast to traditional simple gene sets
- New biopsy results are compared to 50 nearest neighbors in a reference set

Nature Reviews | Nephrology

# The Molecular Landscape of Rejection: Using rejection associated transcripts as classifiers



## TCMR Landscape

- CTLA4 signaling in cytotoxic T cell
- T cell receptor signaling
- Dendritic cell differentiation
- IFN $\gamma$ -mediated effects

## AMR Landscape

- NK cell signaling
- Endothelium activation
- Leukocyte-EC interaction
- IFN $\gamma$ -mediated effects

Halloran P et al. *Nat Rev Nephrol* 2016;12:534-48

# Archetype Analysis

Archetype analysis estimates probability of:

- No rejection
- TCMR
- ABMR

in a single EMB bite

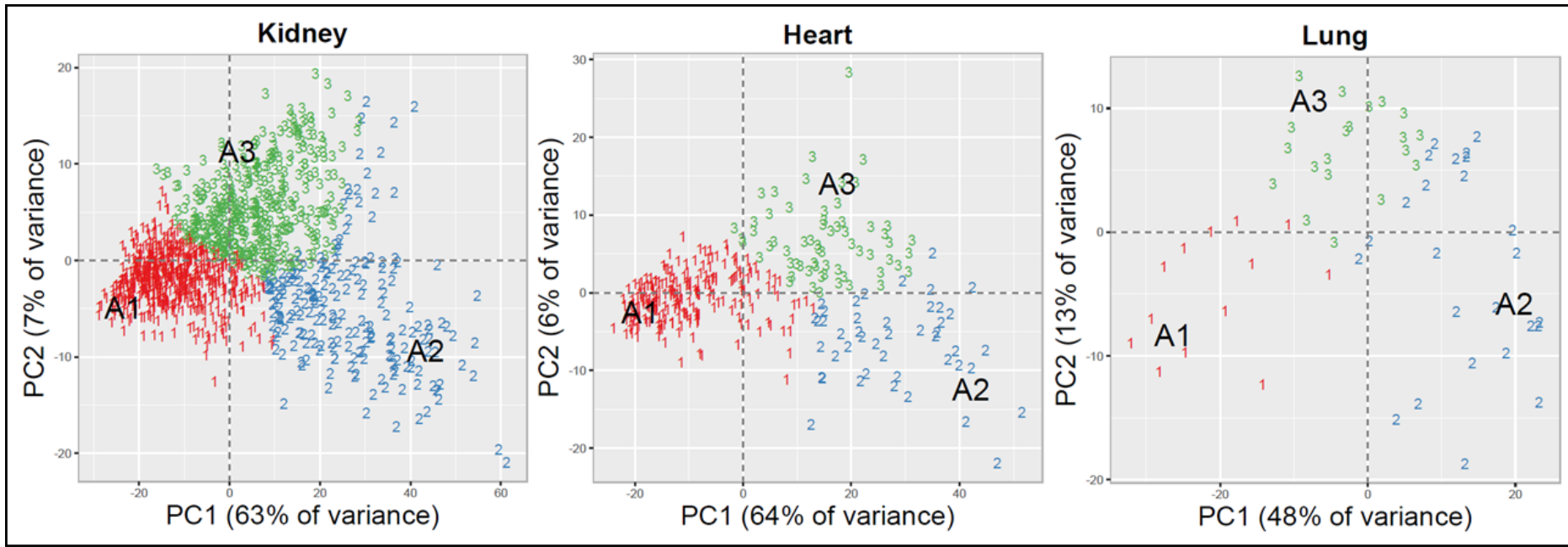
Archetype analysis is an unsupervised method that assigns each biopsy a score based on its similarity to cases in the reference set: scores add up to 1.0



# Comparing the A1,2,3 Archetypes for kidney, heart, and lung as estimated by expression of rejection-associated transcripts (RATs)

A1: no rejection; A2:TCMR; A3: ABMR (or ABMR-like)

- A1=no rejection; A2=TCMR or TCMR-like; A3=ABMR or ABMR-like



**Figure 1.** Archetype analysis based on expression of 453 kidney-derived rejection-associated transcripts (RATs) separated biopsies with non-rejection (A1), TCMR-like (A2), and ABMR-like (A3) features. 1208 kidney, 331 heart, and 58 transbronchial lung biopsies were used.

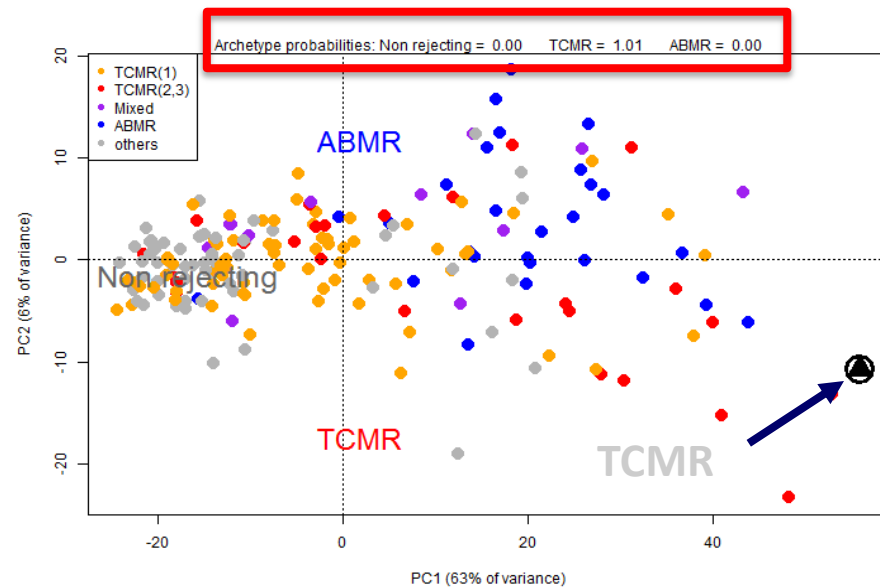
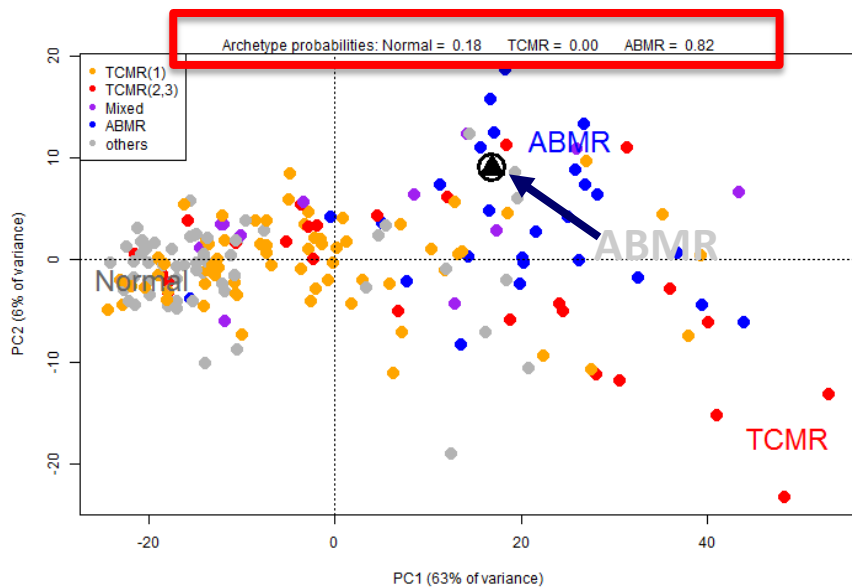


# The INTERHEART Study

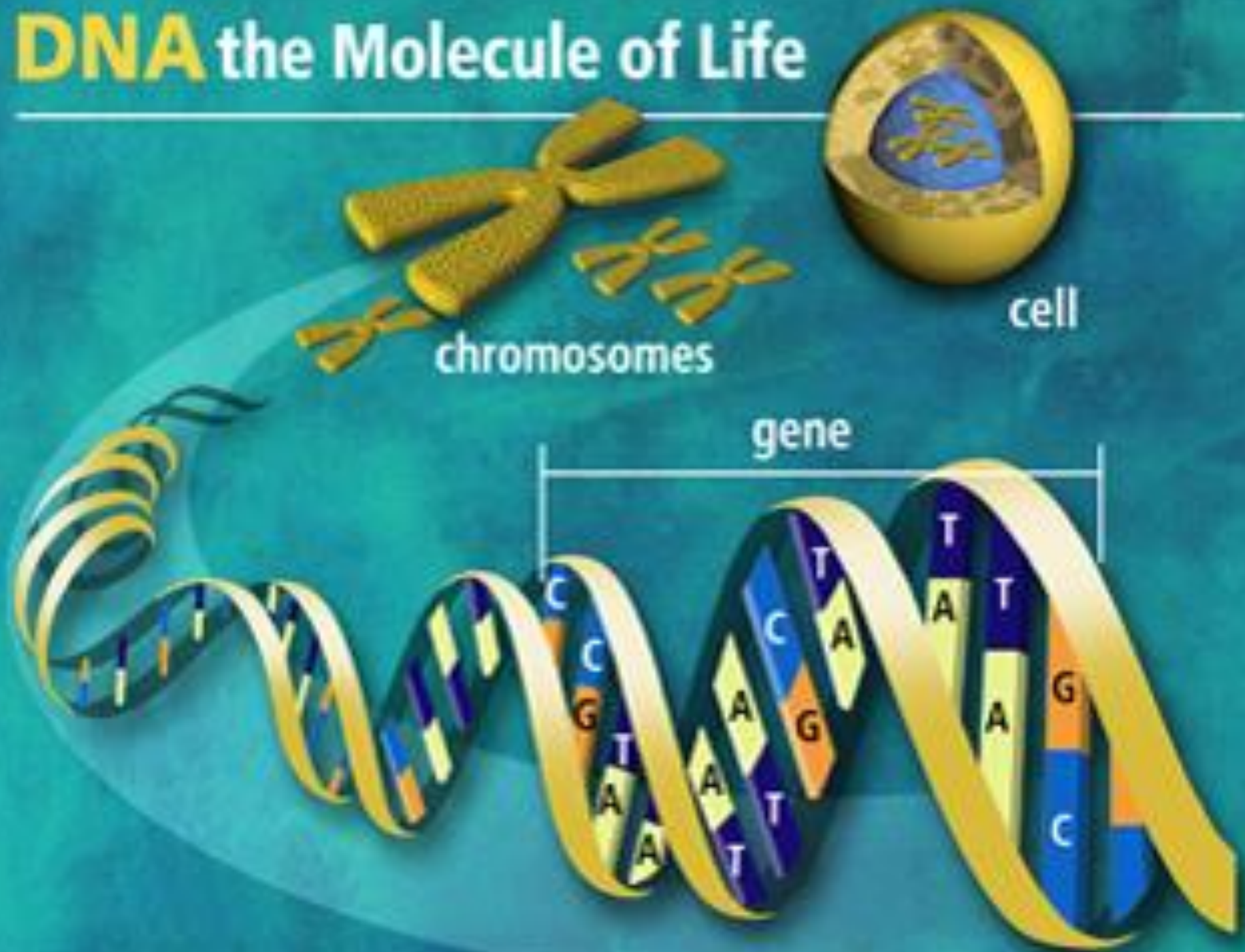
- Prospective validation of the MMDx in heart transplantation
- Assign molecular scores (probability) of T cell mediated rejection and antibody mediated rejection in heart transplant biopsies, in a reference set of 200 biopsies
- Create molecular classifiers that predict antibody mediated and T cell mediated rejection



# Examples of Heart Transplant Endomyocardial Biopsy MMDx-Heart Reports

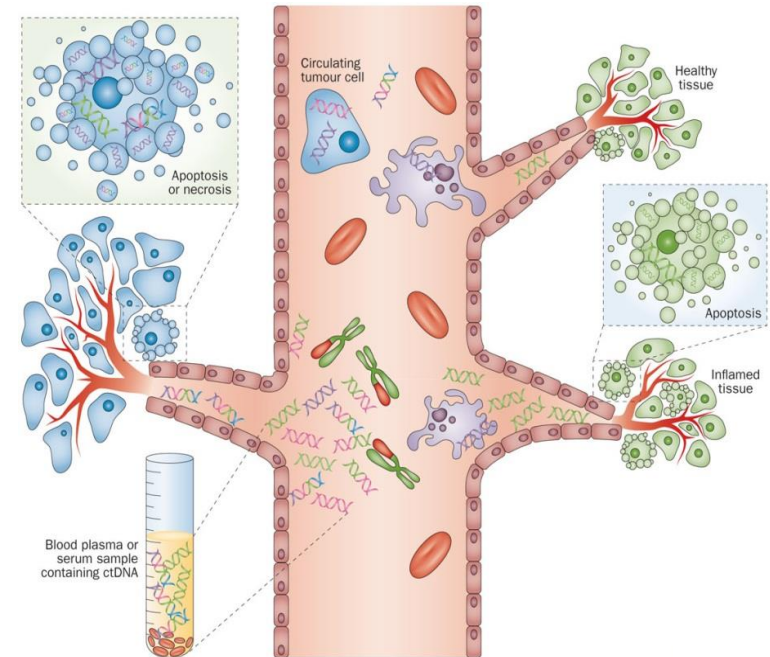


# DNA the Molecule of Life



# Cell-Free DNA (cfDNA) is Found in Circulating Blood

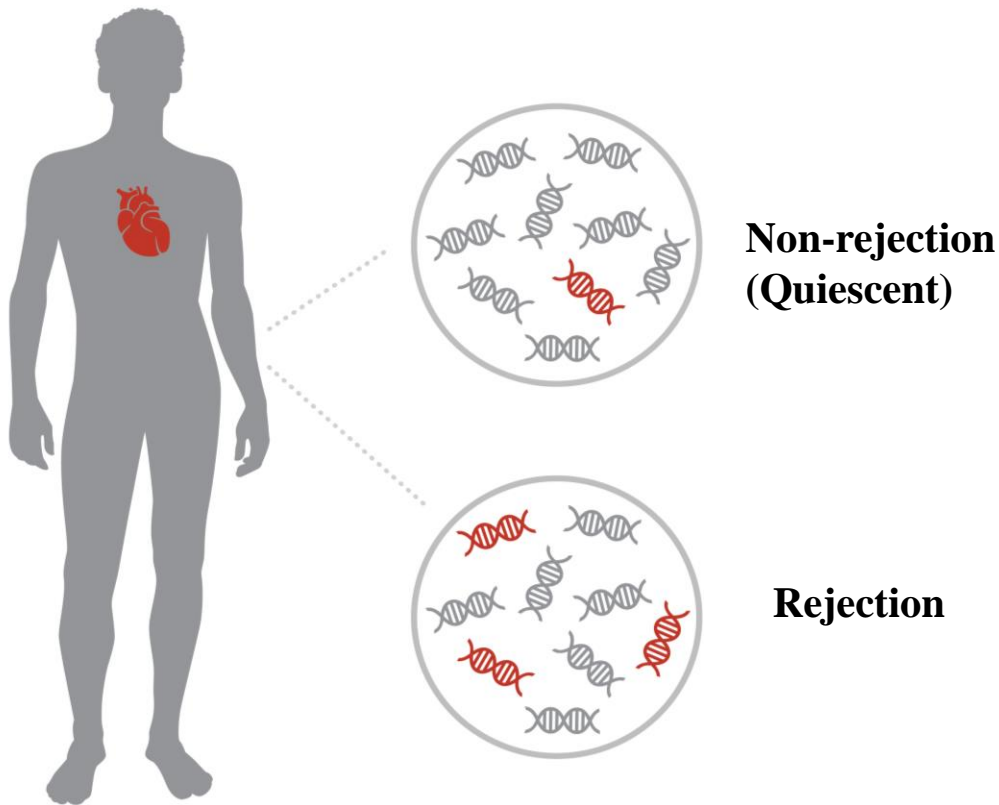
- cfDNA is released from healthy, inflamed or diseased tissue from cells undergoing apoptosis or necrosis.
- cfDNA can be extracted from a blood sample and analyzed.
  - Steady state level due to basal rate of cellular turnover
    - 6 ng/mL plasma (1000 genomes/mL)
  - Higher levels with increased cell damage
    - Trauma



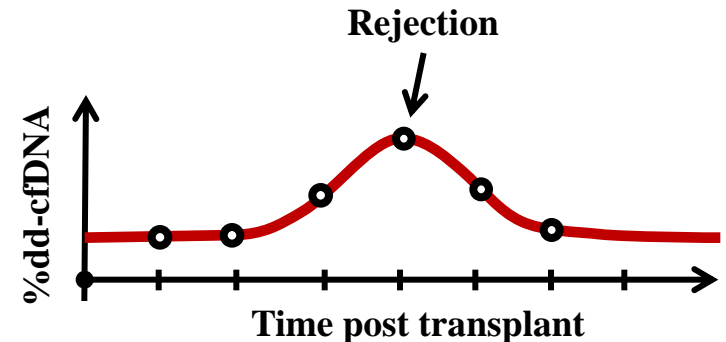
Crowley, E. *et al.* (2013) *Nat. Rev. Clin. Oncol.* doi:10.1038/nrclinonc.2013.110

# Transplantation: A New Application for cfDNA

Donor-derived cell-free DNA (dd-cfDNA) may be useful for non-invasive surveillance of allograft status



**Hypothesis:**  
dd-cfDNA increases with allograft rejection and decreases following effective rejection treatment



# DART Study Design

- The Circulating Donor-Derived Cell-Free DNA (dd-cfDNA) in Blood for Diagnosing Acute Rejection in Kidney Transplant Recipients (DART)
- 14 centers, 384 patients
  - Enrolled at time of transplant and followed for 2 years
- OR*
- Enroll at time of clinical suspicion of rejection; blood draw at time of enrollment and 2 years follow-up
- Allograft rejection reference cases met biopsy-based, histologic Banff WG 2013 criteria for acute or chronic active ABMR



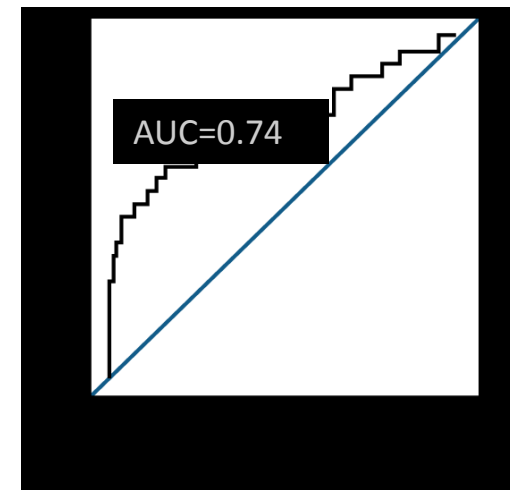
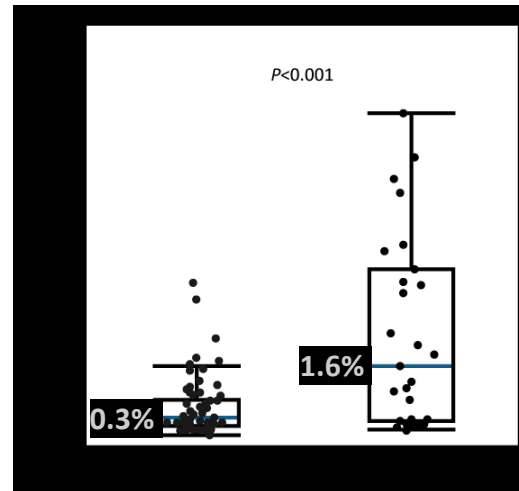
Bloom RD et al. *J Am Soc Nephrol*. 2017. doi:10.1681/ASN.2016091034.



# dd-cfDNA Discriminates Active Rejection from No Active Rejection in Clinical-Suspicion Setting

## dd-cfDNA

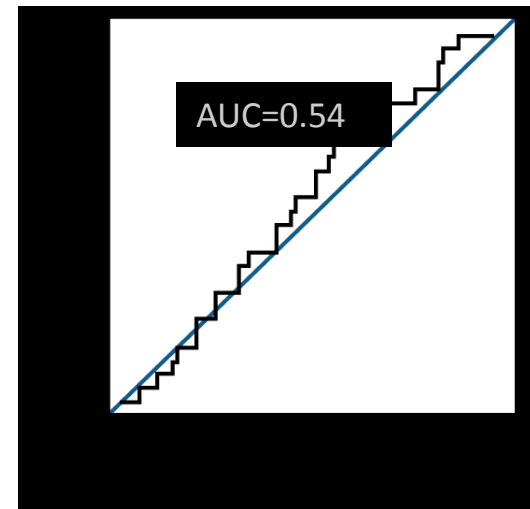
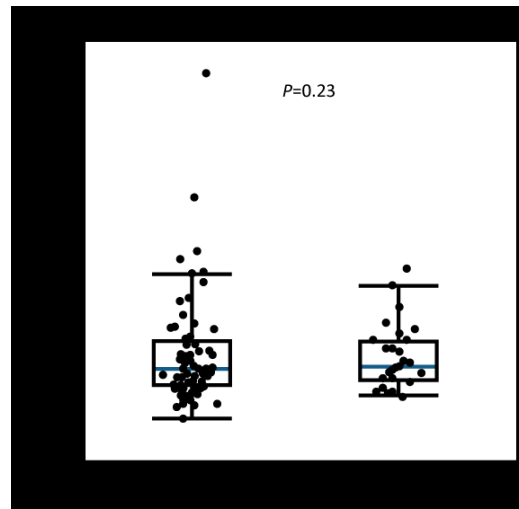
Median 5.3-fold higher in active rejection vs no active rejection. Receiver-Operator characteristics curve shows dd-cfDNA discriminates active rejection



## Serum creatinine

Does not discriminate active rejection from no active rejection.

- Active rejection = Acute, active ABMR; Chronic/active ABMR; and TCMR,  $n=27$  samples from 27 patients
- No active rejection,  $n=80$  samples from 75 patients



# dd-cfDNA Provides Stratification With Higher Probability of Active Rejection at 1% dd-cfDNA Cutoff

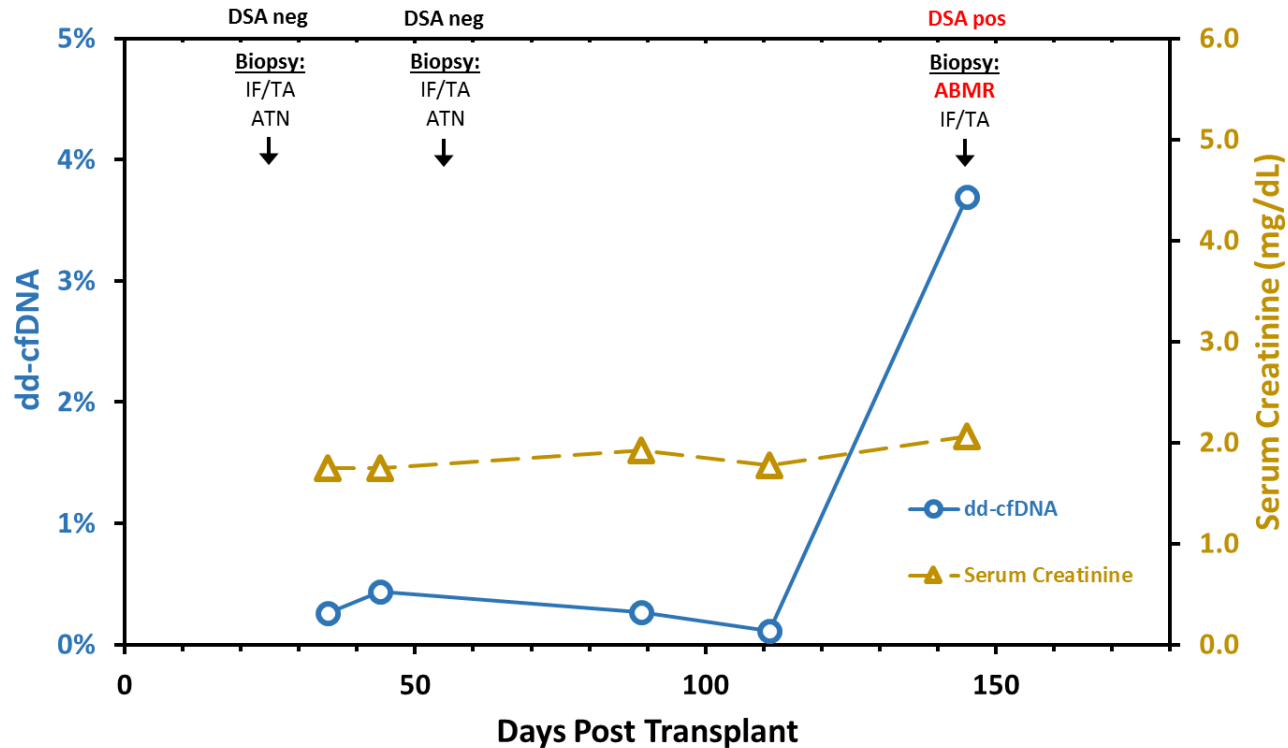
Performance metric	AlloSure test performance at 1% threshold
ROC/AUC	0.74 (95% CI 0.61-0.86)
Sensitivity	85%
Specificity	59%
NPV	84%
PPV	61%

Bloom RD et al. *J Am Soc Nephrol.* 2017. doi:10.1681/ASN.2016091034





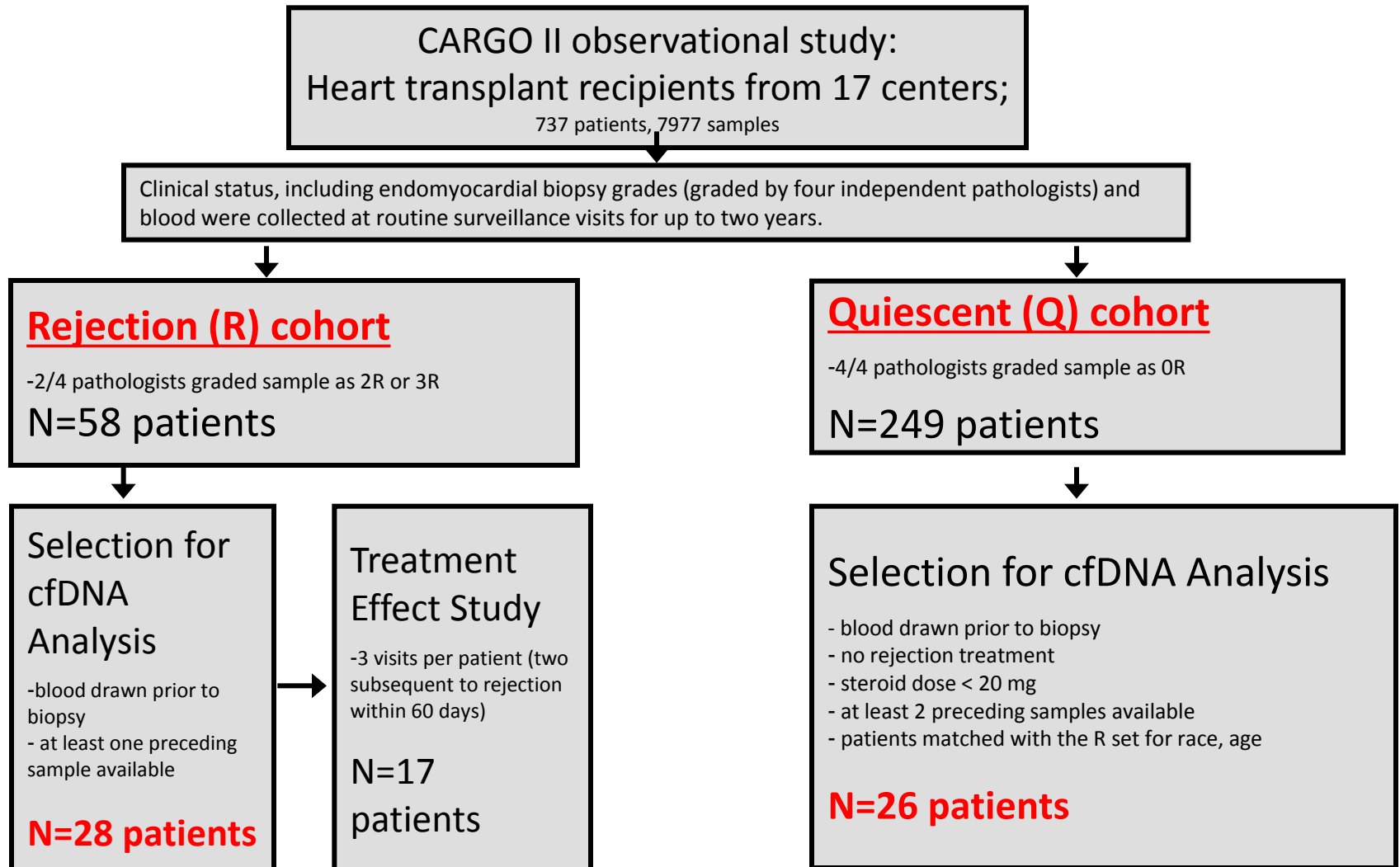
# Example Case with Longitudinal Collection in DART



**Serial dd-cfDNA rises significantly with rejection**  
**Potential to detect rejection earlier than biopsy or serum creatinine**

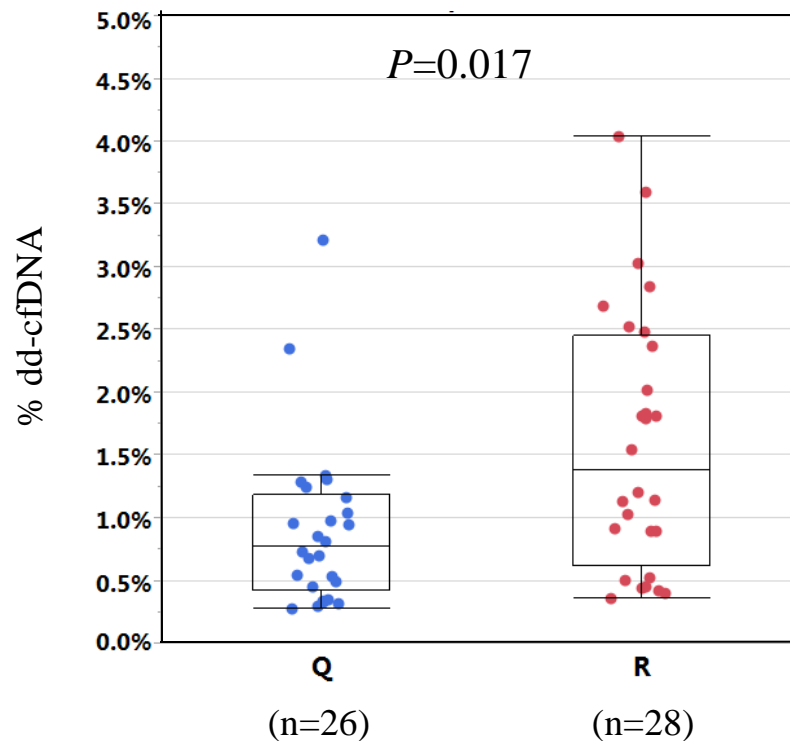
*Bromberg et al., J Assoc Lab Med, 2017*

# Study Design: dd-cfDNA in Heart Transplantation



# dd-cfDNA results from the CARGO II Study

## Increased dd-cfDNA Correlates with Biopsy-Proven Rejection in Heart Transplant Recipients



**dd-cfDNA from quiescent (Q) and rejection (R) samples, expressed as percent dd-cfDNA in recipient.**

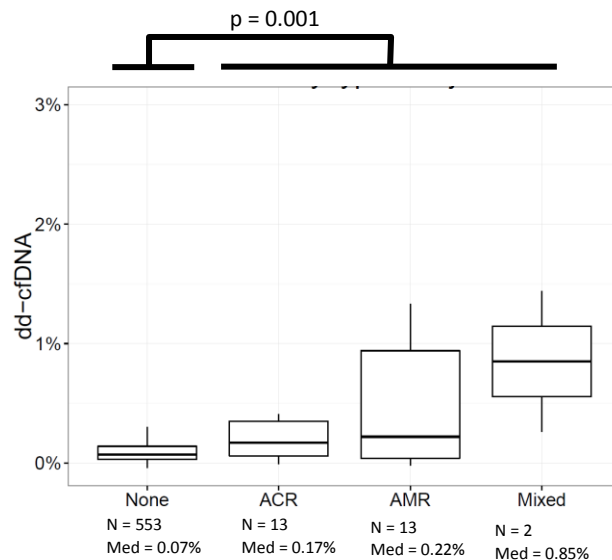
**Mean Rejection group is 1.9-fold higher than mean Quiescent group**

Grskovic M, Kobashigawa J, *Am J Transplant.* 2015; 15 (suppl 3):122.



# dd-cfDNA is Validated to Detect Rejection, Combined ACR and AMR

- Samples from recipients with either ACR or AMR had elevated dd-cfDNA compared to no rejection
- Mixed rejection (biopsy diagnosed with both ACR and AMR, n=2) had the highest dd-cfDNA

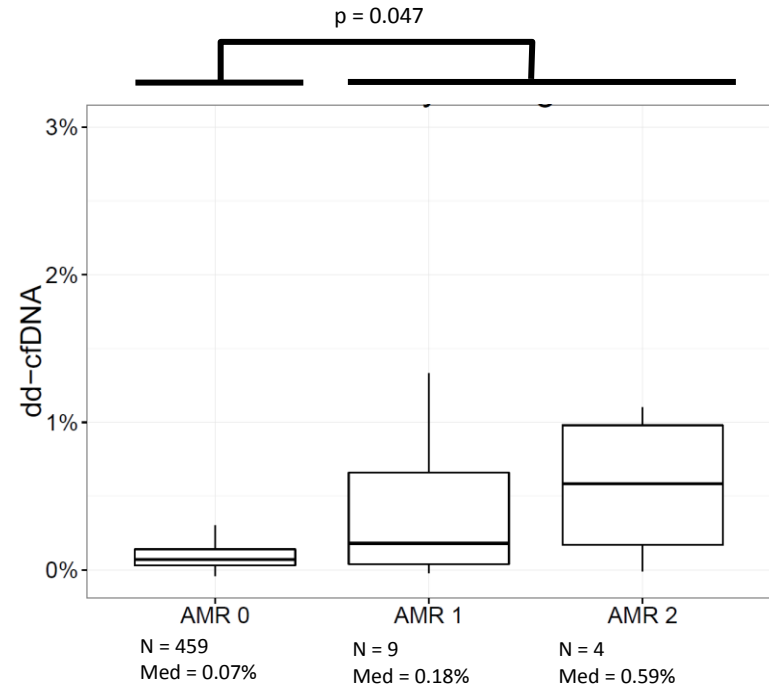


- No Rejection vs All Rejection,  $p=0.001$
- No Rejection vs ACR,  $p=0.05$
- No Rejection vs AMR,  $p=0.047$
- ACR=Grade 2R and Grade 3R
  - Grades 0R and 1R are in the No Rejection group
- AMR=pAMR1 and pAMR2

# dd-cfDNA is Validated to Detect AMR

- AMR (combined pAMR1 and pAMR2) vs No AMR,  $p=0.047$
- Biopsy-negative for AMR: 0.07%
- Median pAMR1 & pAMR2: 0.22%, more than three-fold higher

These data suggest use of a 0.2% threshold for discrimination of AMR from No Rejection.



Kobashigawa, presented at the ISHLT Scientific Sessions 2018

# Novel testing to detect rejection

- There is an unmet need in transplantation to create an objective diagnostic test for allograft rejection
- The pathology reads of EMB rejection are not consistent
- Gene expression profiling and dd-cfDNA appear to be reliable non-invasive methods to detect rejection
- The intragraft mRNA transcripts (MMDx) may pave the way to a new gold standard for rejection and even improve our understanding of the pathology of rejection



# Induction Immunosuppression: To induce or not to induce?

## Common indications

- High risk of acute rejection.
- Impaired renal function (renal sparing protocol).

## Common agents

- rATG = Thymoglobulin.
- Basiliximab = Simulect

## Safety concerns

- Infection.
- Malignancy.

## Frequency of use

- About 50% of patients.
- 30% Simulect and 20% ATG.



# Prevention of Complement Activation and Antibody Development

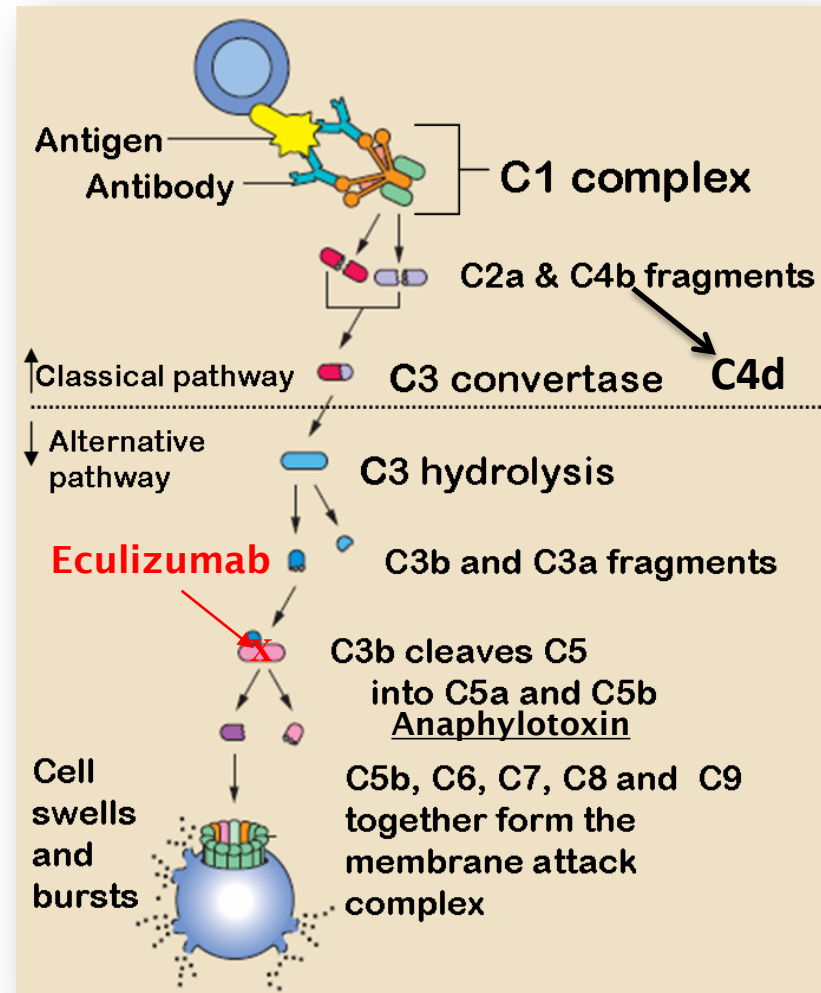
- Many patients demonstrate elevated levels of antibodies which represent a barrier to heart transplantation.
- Antibody-mediated allograft injury is predominantly mediated through complement activation.
- Complement inhibition may allow highly sensitized patients to successfully undergo heart transplantation.
- Eculizumab is a potentially promising agent which through terminal complement inhibition may allow transplantation across an antibody barrier and may even promote accommodation.





# Eculizumab

- Eculizumab is a humanized monoclonal antibody that binds to and subsequently prevents activation of complement component C5 by the amplified C3 convertase molecules.
- Eculizumab is approved by the US Food and Drug Administration for treating paroxysmal nocturnal hemoglobinuria (PNH) and atypical hemolytic uremic syndrome (HUS).



# Accommodation

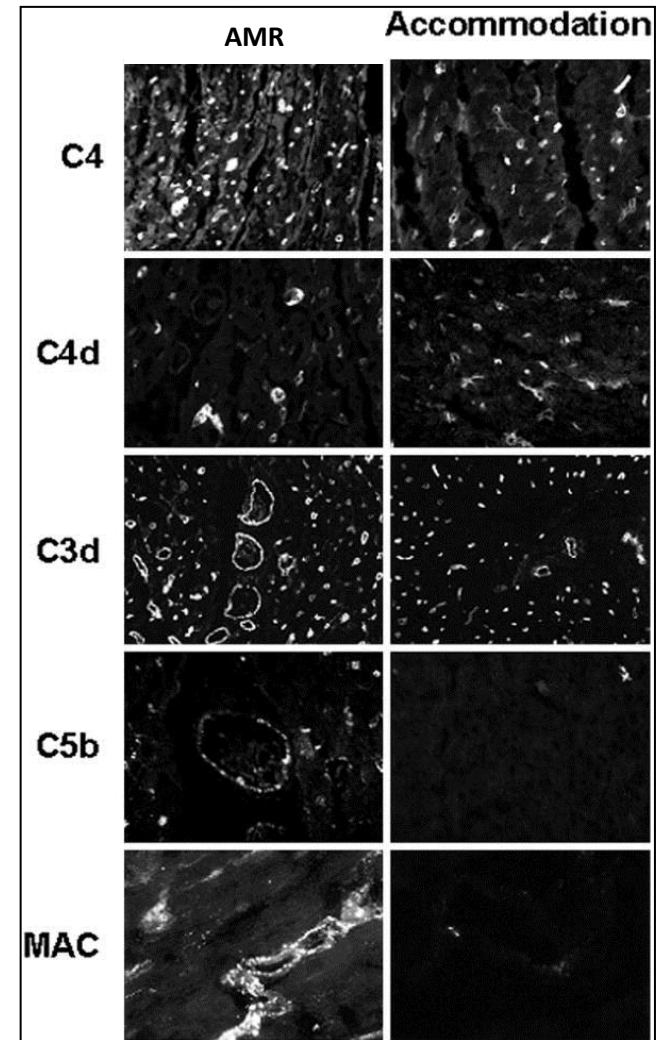
- Accommodation is the absence of humoral-mediated injury and continued function of a graft, despite the presence of anti-donor antibodies in the circulation.
- The difference between accommodation and antibody mediated rejection (AMR) appears to be the level of complement activation<sup>1</sup>.

<sup>1</sup>Williams et al. Transplantation. 78(10):1471-1478, November 27, 2004.



# Activation of Complement in AMR and Accommodation

- In an experimental model of cardiac xenotransplantation<sup>1</sup>, grafts with AMR showed deposition of all complement components, including C4d and C5b-C9 MAC.
- However, xenografts demonstrating accommodation showed C4d deposits only.
- As eculizumab has the ability to inhibit C5b-C9 MAC and C5a generation, it could potentially act as a strong promoter of accommodation.



# De-novo Use of Eculizumab in Highly Sensitized Patients Undergoing Cardiac Transplantation (DUET Trial)

- Pilot study using eculizumab immediately after heart transplant for the highly sensitized patient (mean cPRA =  $83.8 \pm 22.6$ , n=14).
- Study endpoints:
  - Assess efficacy to prevent post-transplant antibodies and AMR.
- Eculizumab Protocol:
  - Eculizumab
    - Day 0: 1200 mg / Day 1,7,14,21: 900 mg / Day 28,42,56: 1200 mg
    - Thymoglobulin 1.5 mg/kg x 5days followed by IVIg 1 gm/kg x 2days

Patel J - unpublished data, ongoing trial



# Demographics (N=14)

Mean recipient Age, Year $\pm$ SD	49.5 $\pm$ 12.3
Mean Donor Age, Years $\pm$ SD	31.9 $\pm$ 11.4
BMI, Mean $\pm$ SD	25.3 $\pm$ 3.7
Female (%)	85.7% (12/14)
Previous Pregnancy in Females (%)	91.7% (11/12)
Ischemic Time, Mean Mins $\pm$ SD	130.4 $\pm$ 52.1
Primary Reason for Tx, Underlying Diagnosis of CAD (%)	14.3% (2/14)
Status 1 at Transplant (%)	100.0% (14/14)
CMV Mismatch (%)	14.3% (2/14)
Diabetes Mellitus (%)	42.9% (6/14)
Treated Hypertension (%)	57.1% (8/14)
Prior Blood Transfusion (%)	66.7% (8/12)
Pre-Transplant cPRA, Mean $\pm$ SD	83.8 $\pm$ 22.6
Pre-Transplant Creatinine Mean $\pm$ SD	1.5 $\pm$ 0.6
Insertion of MCS Device	50.0% (7/14)



# Prospective Donor-Specific Crossmatch Results at Transplant

Crossmatch Type	Results, N=14
T-Flow Cytometry Crossmatch	93.1 ± 122.8 MCS
B-Flow Cytometry Crossmatch	228.8 ± 120.6 MCS
T-Cell Complement-Dependent Cytotoxicity Crossmatch	All negative
B-Cell Complement-Dependent Cytotoxicity Crossmatch	All negative

Positive T-Flow >50 MCS

Positive B-Flow >100 MCS



# Preliminary Outcomes

<b>Endpoints</b>	<b>N=14</b>
1-Year Actuarial Survival	92.8%
1-Year Actuarial Freedom from Cellular Rejection (ISHLT $\geq 2R$ )	100.0%
1-Year Actuarial Freedom from Antibody-Mediated Rejection (AMR $\geq 2$ )	76.8%
1-Year Actuarial Freedom from Any Treated Rejection	86.9%
Average 6-Month Left Ventricular Ejection Fraction (%)*	64.4 $\pm$ 8.1
% of Patients with DSA at 1 Month Post-Transplant	71.4% (10/14)
1-Year Freedom from Treated Infection	58.6%

\* No patient with reduced LVEF

Patel J - unpublished data, ongoing trial



# Current Investigations and Future Directions:

- Clinical trials in heart transplantation
  - Optimal testing for heart transplant rejection (Gene expression profile with Allomap, role of Interheart, cellfree DNA, microRNA)
  - Anti-Thymocyte Globulin (rATG) induction therapy compared to standard triple drug therapy in immunologically low risk patients
    - Single center, currently enrolling
  - Tocilizumab with or without standard triple drug therapy
    - Multi-center, currently enrolling
- Possible future trials
  - Optimization of induction therapies for heart transplant
    - IDES induction therapy in highly sensitized patients
    - C1 esterase inhibition in highly sensitized patients
  - Mechanistic studies and optimal treatment strategies for treatment of primary graft dysfunction (early graft loss)
  - Mechanistic studies to understand cardiac allograft vasculopathy (late graft loss)
  - Expansion of the repertoire of agents for maintenance immunosuppression (moving beyond T cell specific therapies)
  - Developing immunotherapies in oncology treatment may yield specific/targeted immunosuppression (to minimize non-cardiac complications of solid organ transplant)





**Thank You**