

# *4<sup>th</sup> Annual Neuro Symposium*

## *“Space-Time Continuum in Comprehensive Stroke Care”*

OCTOBER 5<sup>TH</sup>, 2019

***BHUPAT H DESAI, M.D.***

***Medical Director  
PVHMC stroke program***

## **COMPREHENSIVE STROKE CENTER CERTIFICATION**

**Leading the Way to Better  
Outcomes for Stroke Patients**



**The Joint  
Commission**



**American Heart  
Association  
American Stroke  
Association**

**CERTIFICATION**  
Meets standards for  
**Comprehensive Stroke Center**

**FINANCIAL DISCLOSURE:NONE**

# A NEW ERA OF ACUTE STROKE CARE

**3 4.5 6 8 16 24**

TIME BASED V/S TISSUE BASED TREATMENT DECISION

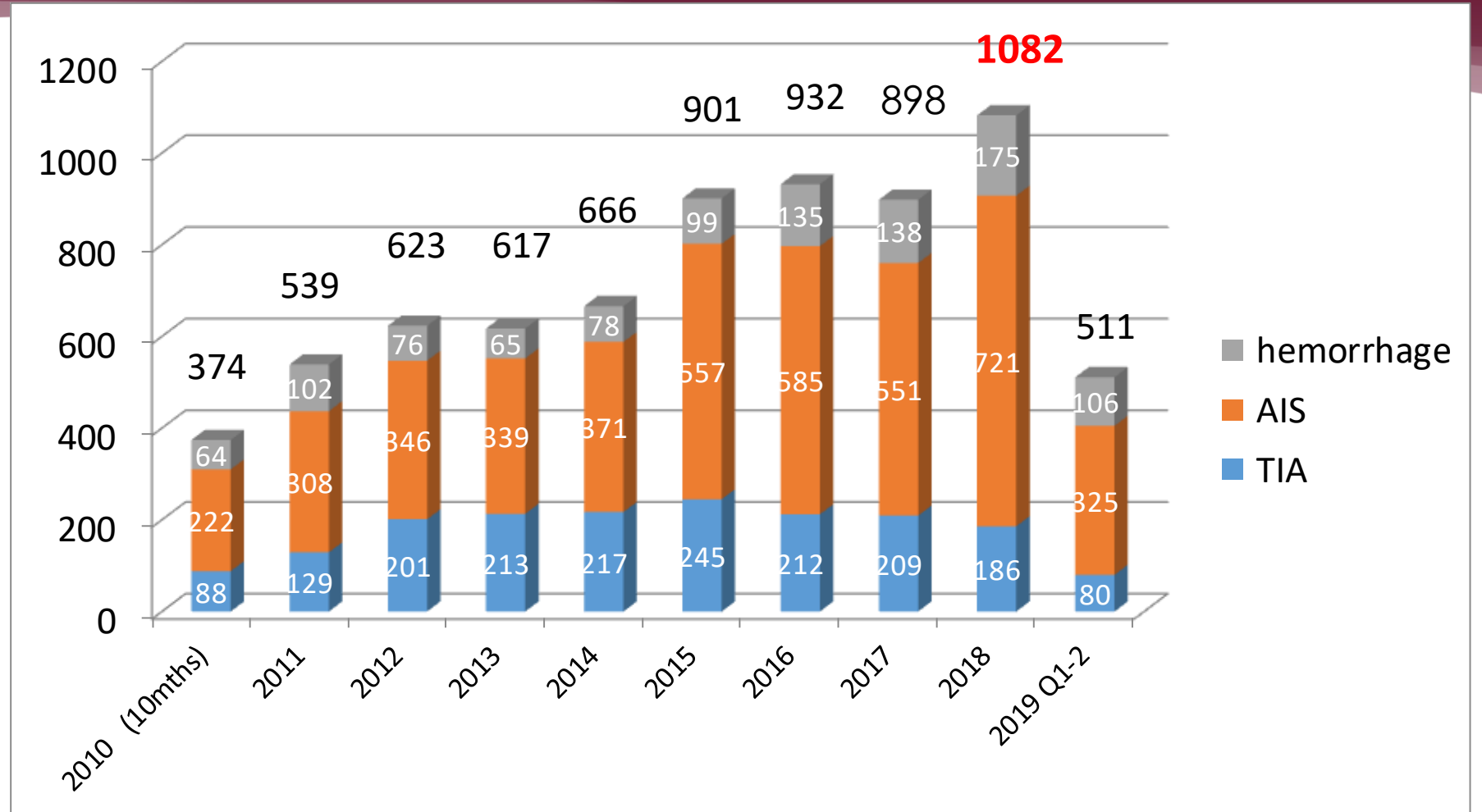
PHYSIOLOGICAL



CHRONOLOGICAL



# All Stroke Volume



# Stroke Alerts – 2017 thru 2019 Q1-2

	2017	2018	2019 Q1-2
Total Stroke Alert Activations	983	1409	723
% of SA with Dx of AIS/ICH/SAH	33%	30%	38%
% of AIS treated with tPA/IR (SA)	40%	46%	40%

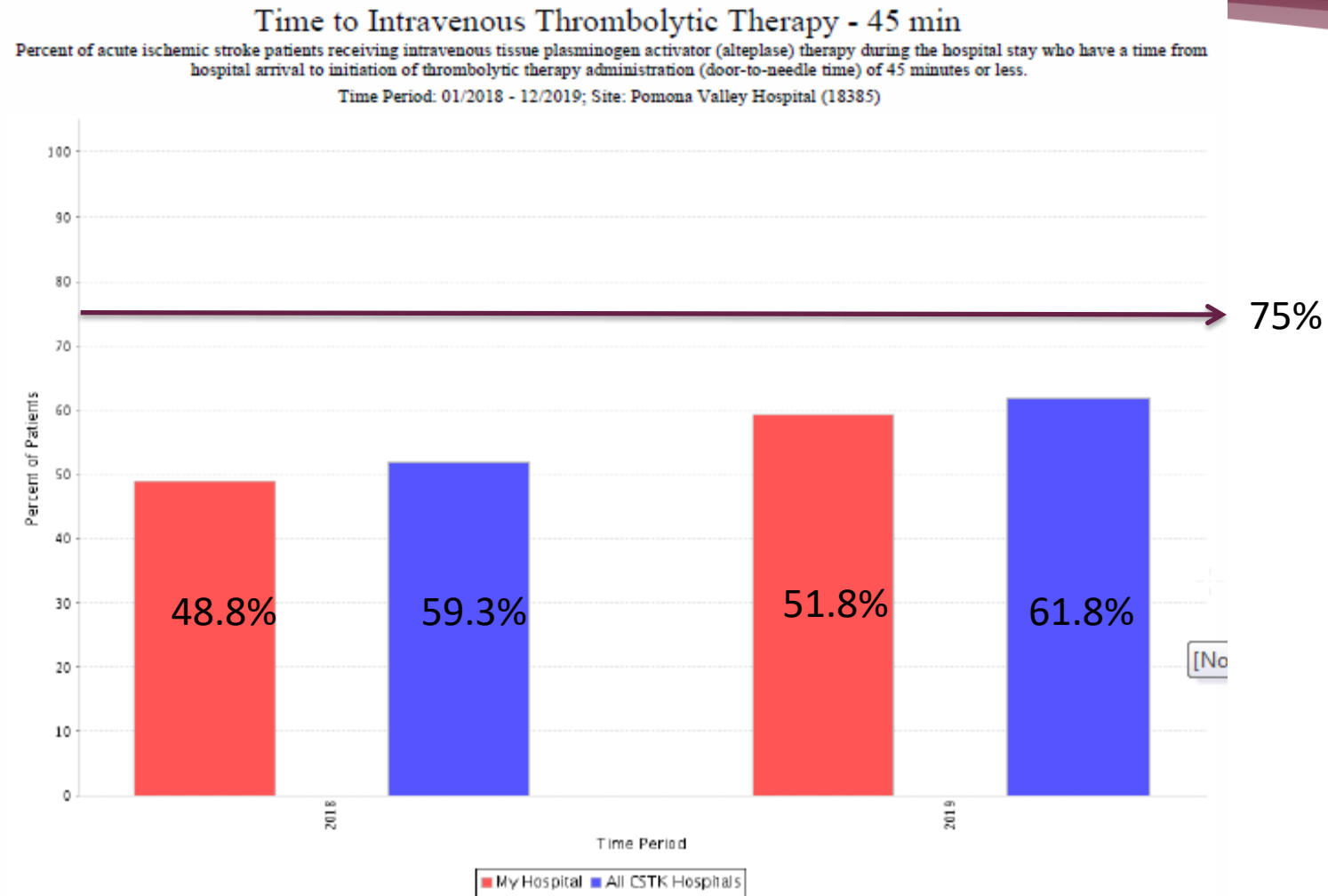
# Subarachnoid Hemorrhages

	2017	2018	2019 Q1-2
Total SAH	42	54	38
Clipping (SAH)	3	2	2
Coiling (SAH)	19	35	20

# Thrombolysis Treatments

	2017 (551 AIS)	2018 (721 AIS)	2019 Q1-2 ( 325 AIS)
IV tPA only	68	92	50
IV tPA + thrombectomy	19	44	12
<b>Total IV tPA</b>	<b>87</b>	<b>127</b>	<b>62</b>
Thrombectomy Only	27	47	24
<b>Total Thrombectomy</b>	<b>46</b>	<b>91</b>	<b>36</b>
<i><b>IV tPA Treatment Rate</b></i>	<i><b>15.7%</b></i>	<i><b>17.6%</b></i>	<i><b>19.1%</b></i>
<i><b>tPA/IR Treatment Rate</b></i>	<i><b>20.6%</b></i>	<i><b>25.3%</b></i>	<i><b>26.4%</b></i> <i>(CSC benchmark 24.7%)</i>

# DTN<45 mins – Goal =75%

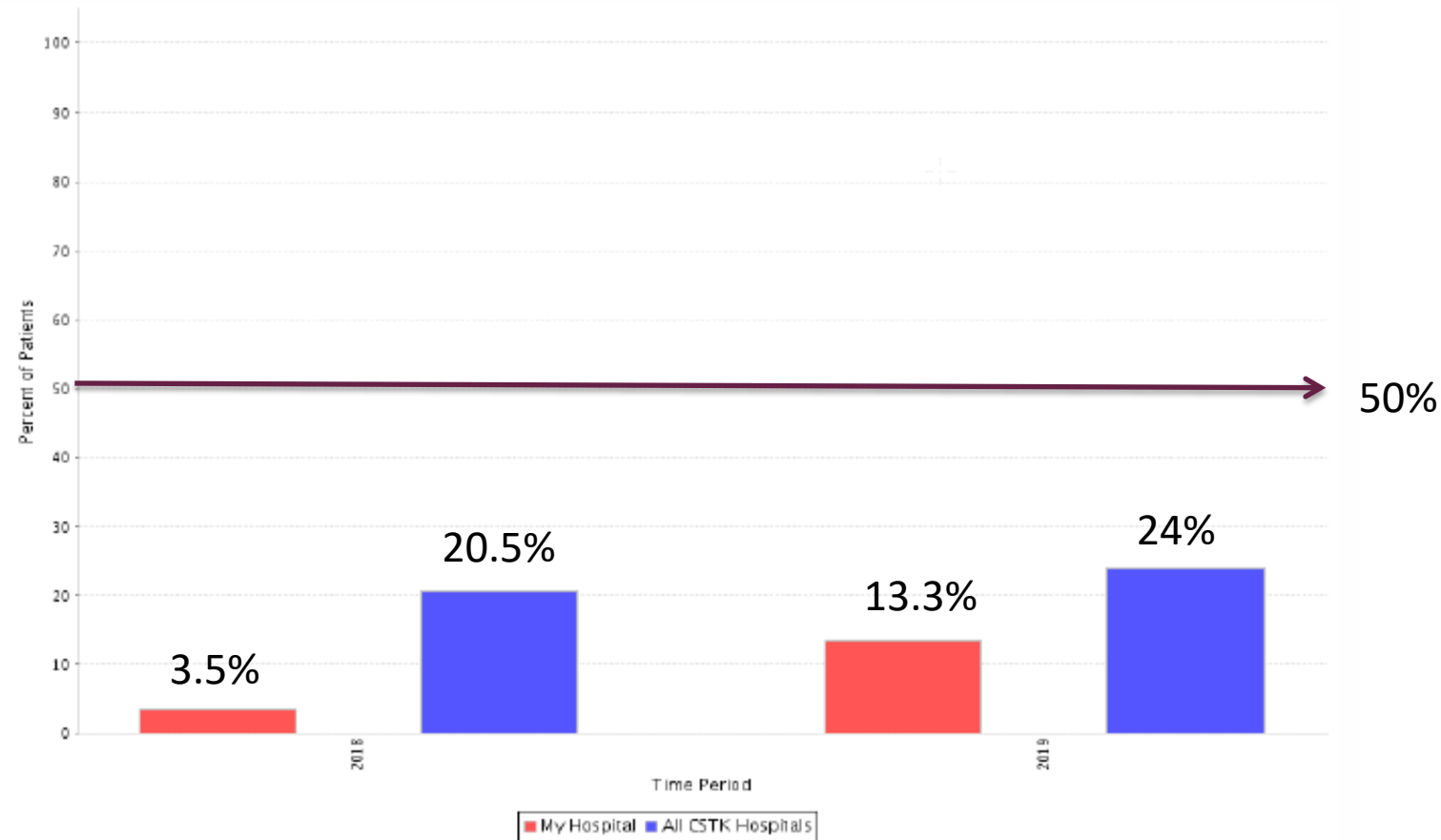


Old goal was 50%

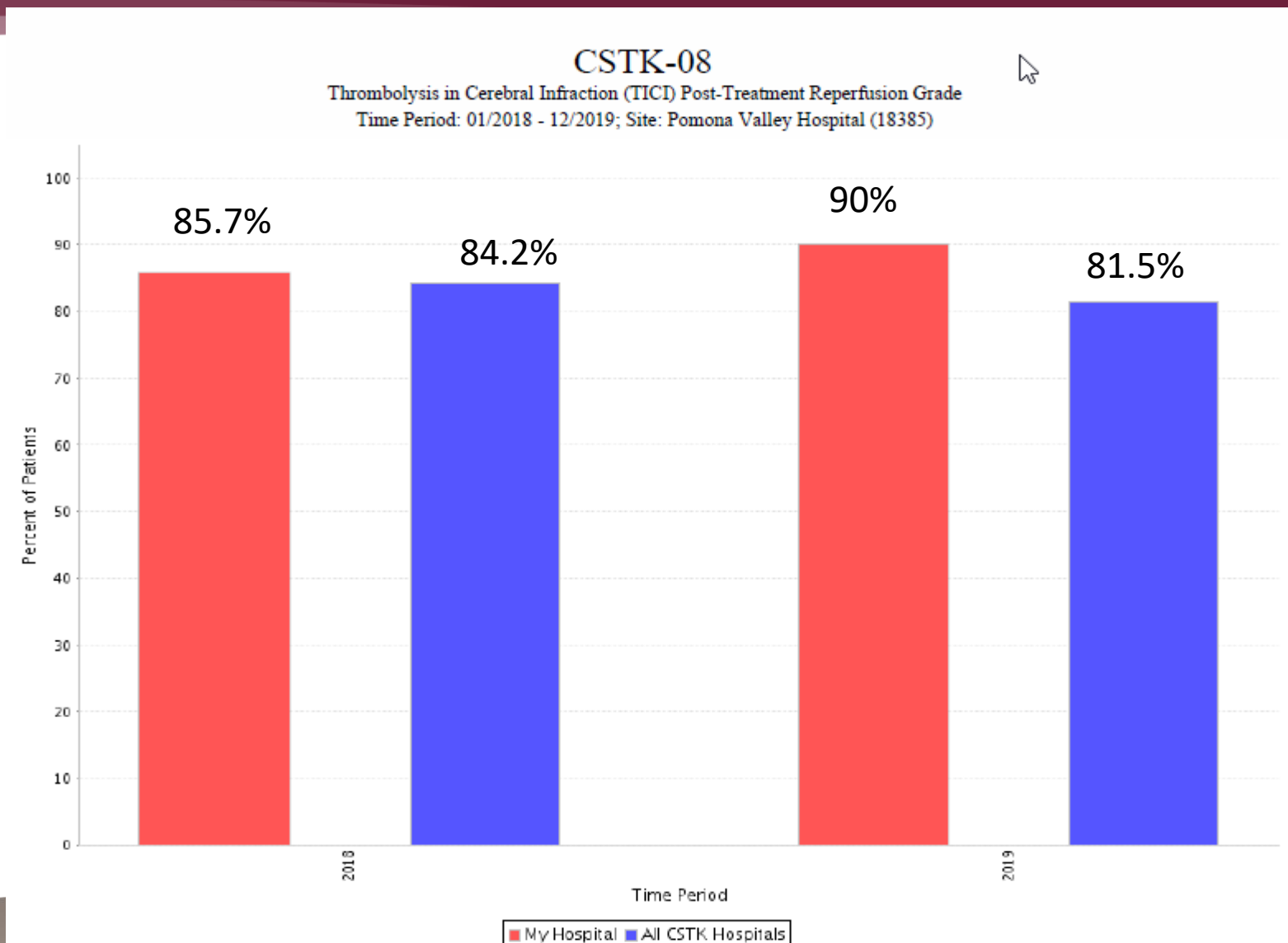


# DTN<30 mins – Goal =50%

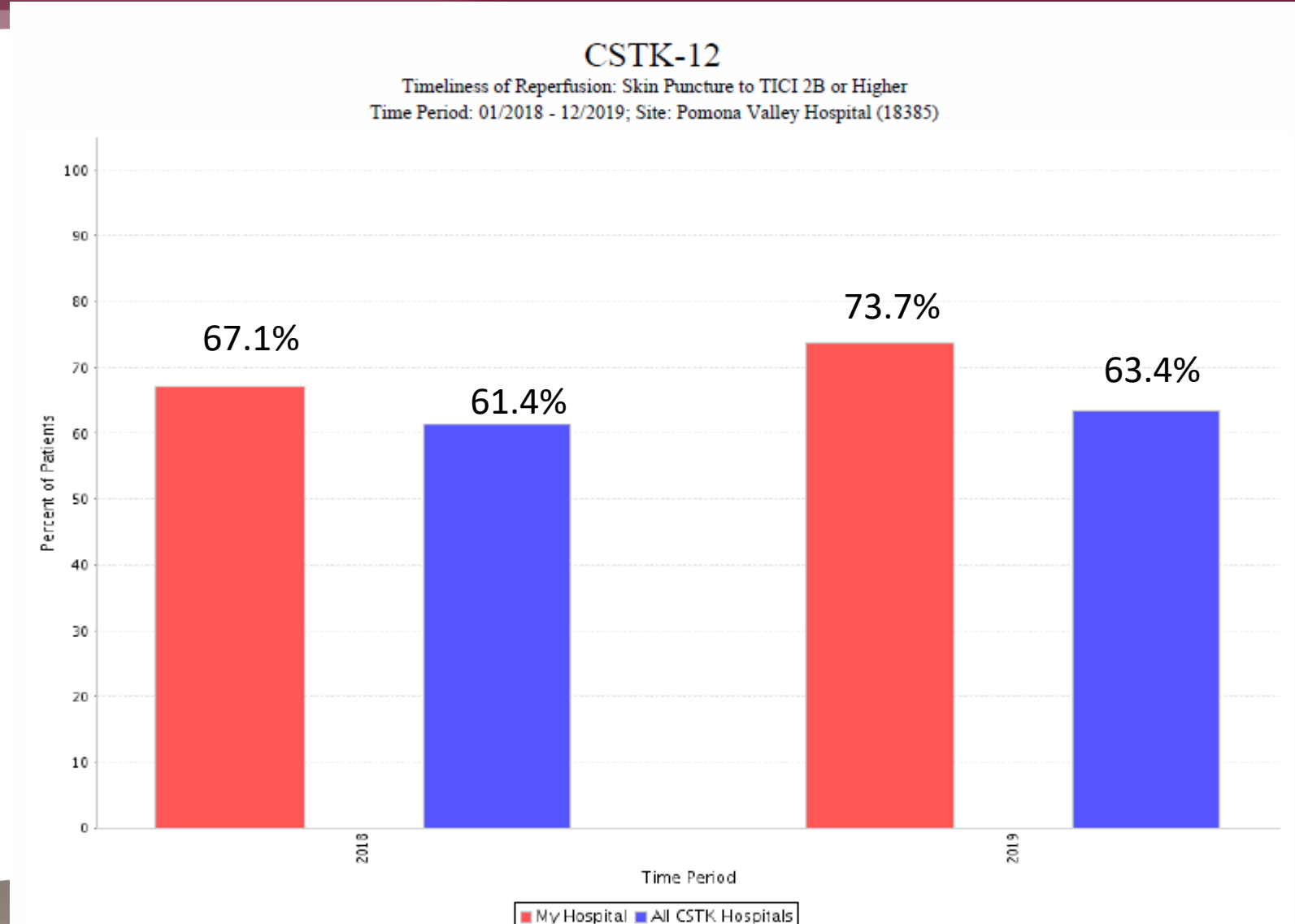
**Time to Intravenous Thrombolytic Therapy - 30 min**  
Percent of acute ischemic stroke patients receiving intravenous tissue plasminogen activator (alteplase) therapy during the hospital stay who have a time from hospital arrival to initiation of thrombolytic therapy administration (door-to-needle time) of 30 minutes or less.  
Time Period: 01/2018 - 12/2019; Site: Pomona Valley Hospital (18385)



# % of successful recanalization TICI2B and above



# % of cases with Groin to Successful Reperfusion within 60 mins

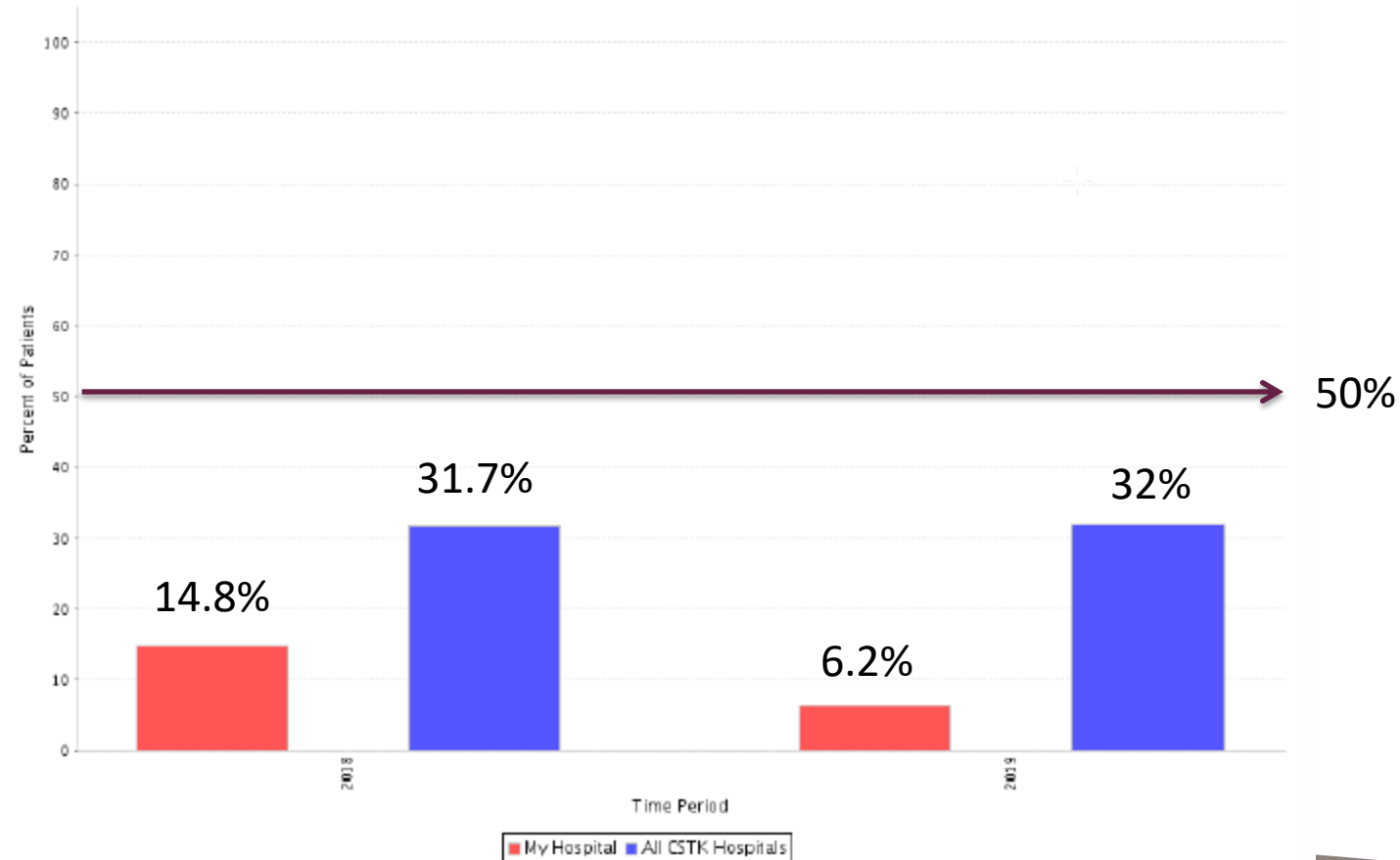


# Door –to – First Pass - New Goal = 50%

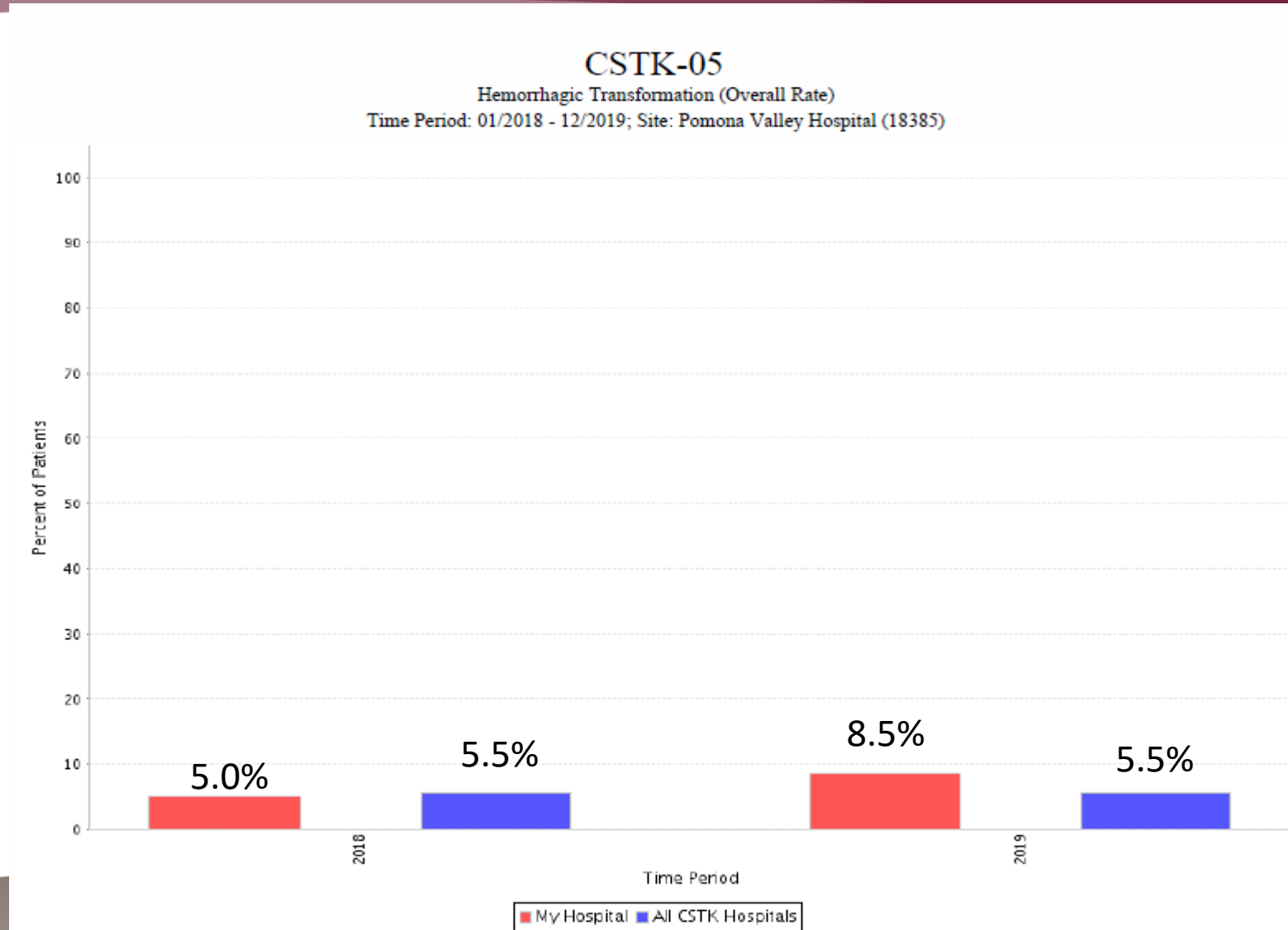
Door to Start of Revascularization (DTR) within 60 minutes for patients transferred from an outside hospital OR 90 minutes for patients presenting directly.

Percentage of patients with acute ischemic stroke who receive mechanical endovascular reperfusion therapy and for whom the first pass (i.e., deployment) of the device is  $\leq 60$  minutes in patients who are transferred in from an outside hospital or  $< 90$  minutes for patients presenting directly.

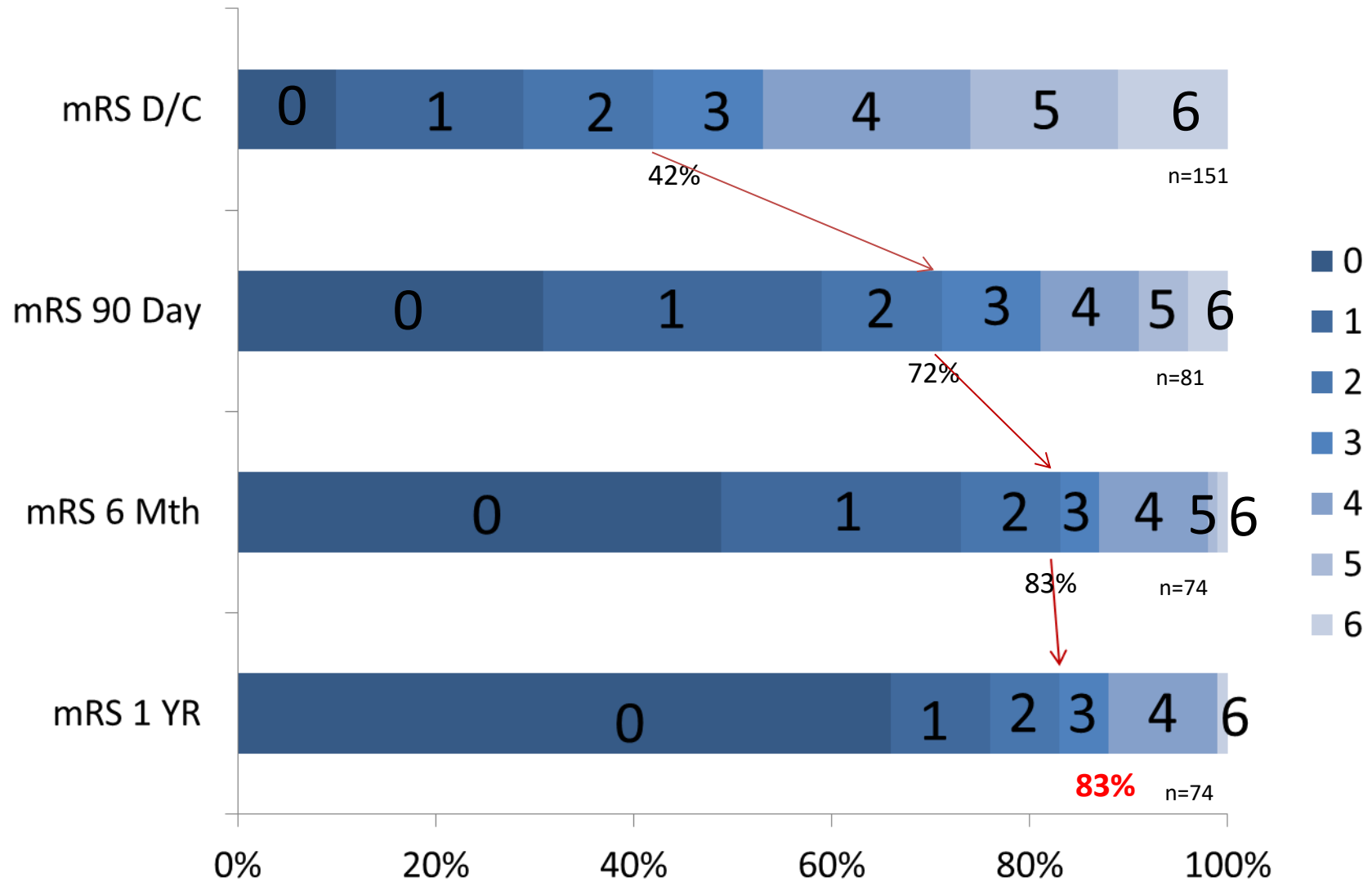
Time Period: 01/2018 - 12/2019; Site: Pomona Valley Hospital (18385)



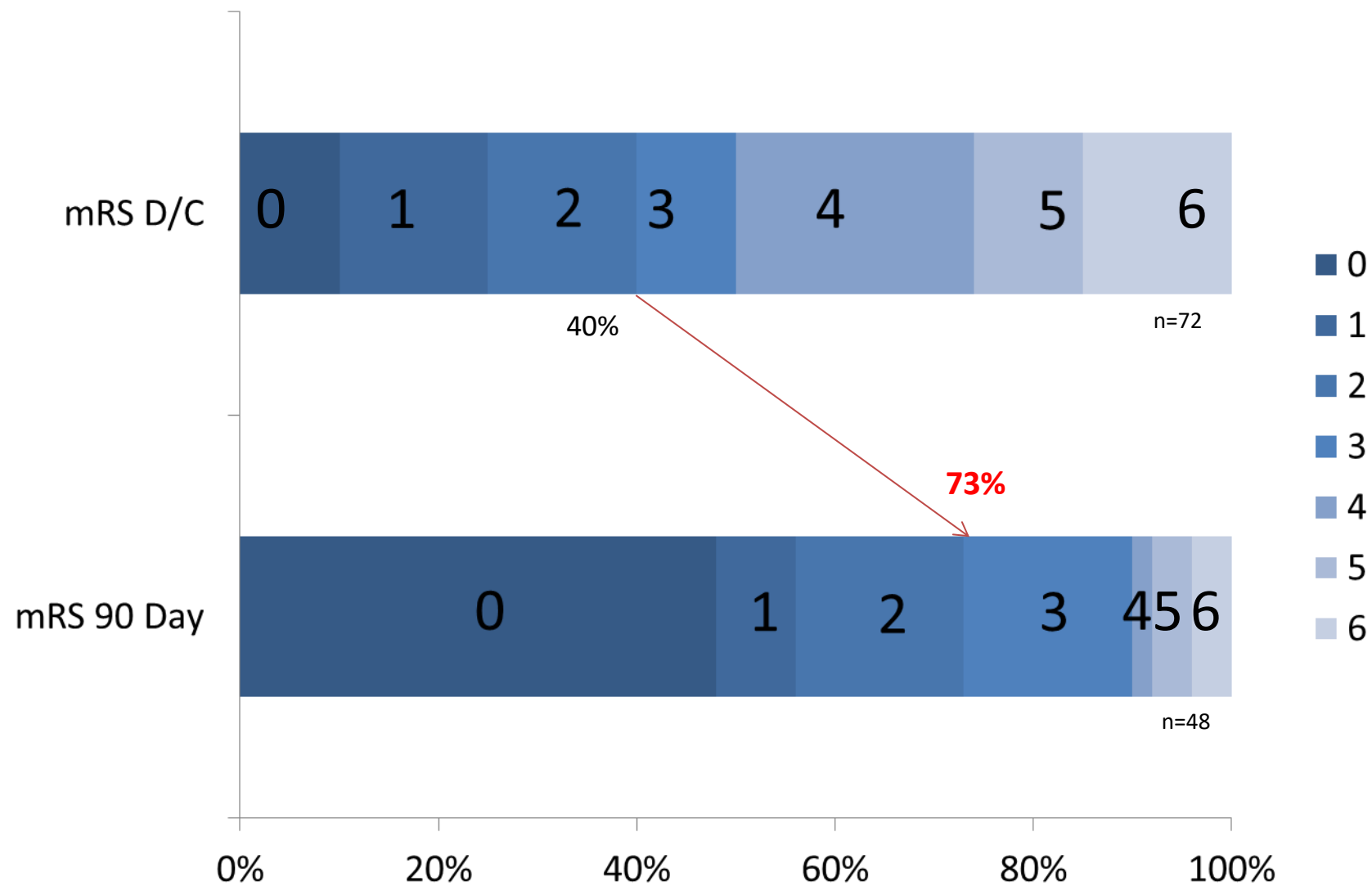
# Symptomatic Hemorrhagic Transformation



# mRS at DC/90/180/1 Year Follow Up TPA/IR/SAH (2017)



# mRS at DC/90 Follow Up TPA/IR (2019) Q1/Q2



# THANK YOU

*Mark your calendar*

*October 24, 2020*

*for the next year Neuroscience Symposium*



*Expert care with a personal touch*